



PROBE **INDUSTRIES**

2555 West 237th Street

Torrance, CA 90505

Phone: 310-784-2977

Fax: 310-784-2970

Internet: www.probeindustries.com

Contact: info@probeindustries.com

**Probe Industries products are proudly
manufactured in Torrance, California USA**

PROBE

INDUSTRIES

PERFORMANCE ENGINE COMPONENTS

2006
CATALOG
\$3.00



ABOUT PROBE

PROBE INDUSTRIES

Probe Industries was founded in 1987 by Chris Huff and Mark O'Neal with a minimal investment and a single idea. To manufacture unique, high quality engine components. Today Probe Industries is a world class manufacturer of high quality engine components ranging from forged pistons to main girdles, rocker arms, shaft rocker systems, and billet pulley and bracket kits.



New Piston Manufacturing

In early 2001 Probe began with a clean sheet of paper to design a unique manufacturing process that allowed machining an extremely high quality forged piston at minimal expense. That quality, along with substantial price reductions, has produced a meteoric rise in piston sales.

Expansion

In an exciting move, Probe Industries, in August 2002, moved into a new 25,000 sq/ft facility in Torrance, CA. This move allowed the quadrupling of manufacturing capacity & vastly improve delivery which enhanced customer service.

PROBE IN-HOUSE CAPABILITIES



Product Design Center

Here at Probe's Design Center you will find the latest in computer aided solid modeling engineering software.



Quality Control Technology

Probe houses a quality control & inspection department utilizing the latest CMM technology, calibrated to 50 millionths.



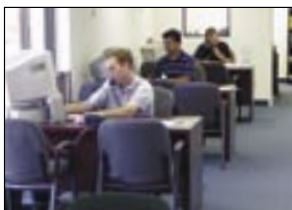
Modern CNC Machine Centers

Probe Industries is committed to the manufacturing of product that is of the highest possible quality. The first step in that direction was the investment of millions of dollars in the latest CNC machine tools.



Instant Availability

Probe is dedicated to maintaining a full inventory of catalog items, having over 30,000 pistons ready to ship.



Knowledgeable Sales Staff

At Probe Industries you will find a knowledgeable and friendly technical sales staff of performance enthusiasts available to assist you.

FEATURED PRODUCTS

PISTONS



Pages 1-6

PISTONS



Pages 7-52

WRIST PINS



Page 54

ENGINE KITS



Pages 55-60

CONNECTING RODS



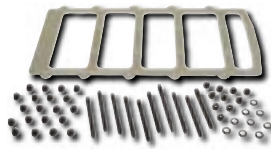
Pages 61-62

CRANKSHAFTS



Pages 63-64

MAIN GIRDLES



Page 54

ROCKERS & GIRDLES



Pages 66-67

PROBE PISTON FIXTURE



TABLE OF CONTENTS

About Probe Industries	I
Featured Products	II
Pistonology	III
Piston Series	IV
Frequently Asked Questions	V-VI
Forged Pistons	
FPS Series	1-6
Chevy	
Small Block	1-2
Big Block	3
Ford	
Small Block	4-5
Big Block	6
SRS Series	7-53
Acura & Honda	47-50
Chevy	
LS1	8-9
350, 363 & 383	10-15
352, 377, 400 & 434	16-18
454 & 496	19-23
502	24
Chrysler	
360 & 408	25
440 & 493	26
Ford	
4.6L & 5.4L	27-28
2300	29
Focus	29
302, 331 & 347	30-35
351 & 393 Cleveland	36-37
351, 383 & 393 Windsor	38-39
408, 418 & 427 Windsor	40-41
460, 532 & 557	42-43
390 & 428FE	44
Oldsmobile	45
Pontiac	46
Mitsubishi	51
Nissan	52
Subaru	51
Toyota	53
Wrist Pins	54
Engine Kits	55-60
Connecting Rods	61-62
Crankshafts	63-64
Main Girdles	65
Rocker Arms	66
Shaft Rockers	66
Stud Girdles	67
Terms & Policies	68

PISTONOLOGY

THREE REVOLUTIONARY STEPS

It's true that Probe Industries has reduced the cost of forged pistons to an unimagined level and, amazingly, did it while improving quality. Many people have asked; "How did you do that?". Our clean slate approach to piston manufacturing allowed us to accomplish this in three revolutionary steps:

1. Forging Technology

Our forgings are designed specifically for our manufacturing process, greatly reducing the need for "second op" setup and machining operations.

2. Manufacturing Process

Our proprietary Single Cell Manufacturing™ process reduces the transfer of parts from machine to machine to an absolute minimum. This not only makes the manufacturing process more efficient but also eliminates "tolerance stacking" making an incredibly accurate piston.

3. Investment In Technology

While several piston manufacturers have invested in the latest machine centers for making pistons, only Probe uses these high end multi-process machines for mass production. The result is a high quality piston at a minimum of cost.

ANATOMY OF A BETTER PISTON

Anti-Detonation Grooves

Reduces detonation by tempering pressure spikes, enhances piston ring life!

Fully CNC Machined

Domes & valve reliefs are fully CNC machined for consistency and precise clearance to valves & combustion chambers.

Precision Forged of

Aircraft Alloy Aluminum

Our forgings are approximately 75% stronger than hypoeutectic or hypereutectic castings!

Pressure Equalization Channel

Enhanced ring seal, producing more power and enhancing fuel economy!

Slotted Drain Back Holes

Slotted drain back holes prevent oil from collecting in the oil ring groove.

CNC Diamond Pinhole Finish

Produces ultra-straight pinholes and outstanding microfinish for extended life & durability

Slotted Pin Oiling

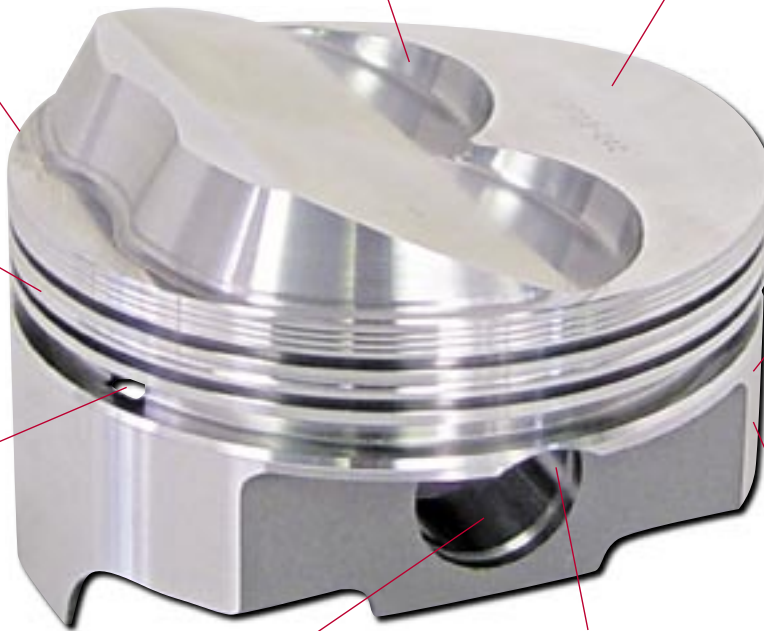
Slotted pin oiling enhances wrist pin and pin hole oiling for durability and long life.

Ultra-Tight Running Clearance

Increases piston and piston ring life and reduces blowby!

CNC Diamond Skirt Finishing

Retains oil on the piston skirt providing superior anti scuffing capability! Also reduces piston noise!



PISTON SERIES

FACTORY PERFORMANCE SERIES - FPS



FPS SERIES Pages 1-6

Probe FPS Forged Pistons are designed for heavy duty (towing, etc.) or high performance street car, trucks, marine and some racing applications. FPS pistons are far stronger than hypoeutectic or hypereutectic cast pistons. May be used with boost and nitrous oxide.

- VMS-75 High Silicon Aluminum
- Tight piston to wall clearance
- Reinforced piston skirts (Eliminates collapsed piston skirts)
- Increased valve clearance
- Reduced piston weight
- Offset wrist pins
- Press fit piston pins

SPORTSMAN RACE SERIES - SRS



SRS SERIES Pages 7-36

Probe SRS forged pistons are designed for high performance street and most racing applications. SRS pistons are available in a wide variety of designs, tuned to achieve the highest performance possible. Any combination from ultralight 2 barrel oval track to high performance street, to heavily boosted race only cars will find Probe SRS Forged Pistons to be the perfect piston.

- 2618-t6 Forged Aluminum
- Lightweight piston designs
- Tight running clearances
- Low drag skirt design
- Design specific valve relief's
- Lightweight wrist pins
- Full floating wrist pins
- Narrow piston rings
- Large variety of compression ratios

PREMIUM RACE SERIES - PRS



PRS SERIES Page 8 & 25

Probe PRS Forged Pistons are specifically designed for racing applications. Now available for the Chevrolet 350 and Ford 2300, Probe PRS pistons are designed to be the lightest pistons available anywhere. In addition to the ultralight weight Probe PRS forged pistons are designed to radically reduce drag and enhance ring seal to increase power.

- 2618-t6 Forged Aluminum
- Ultralight piston designs
- Ultralight wrist pins
- Full floating wrist pins
- Lateral gas ports (some models)
- .043" top and second rings (some models)
- "Frictionless" skirt designs
- Narrow ring lands

FREQUENTLY ASKED QUESTIONS

QUESTIONS | ANSWERS

What piston to wall clearance do I run?

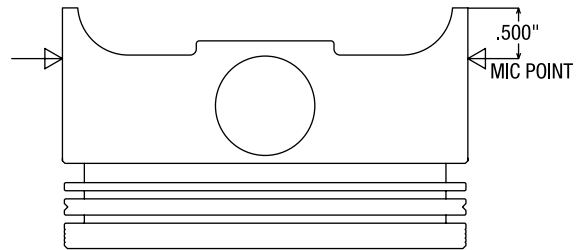
Proper piston to wall clearance depends on the power level of the engine. Use the chart below as a guideline. Minimum clearances are fine for naturally aspirated street, however the clearance should be increased for higher output engines, especially with nitrous and forced induction.
Piston clearance chart

Bore	FPS series		SRS & PRS series	
	Min.	Max.	Min.	Max.
3.000-3.624	.0010	.0040	.0020	.0060
3.625-3.999	.0015	.0045	.0025	.0065
4.000-4.199	.0020	.0050	.0030	.0070
4.200-4.500	.0025	.0055	.0035	.0075

If you are not sure of the clearance you should run, call for assistance.

Where do I measure the piston skirts?

For the most accurate measurement place your micrometer at .500" from the bottom of the skirt 90 degrees from the pinhole.



How deep are the Valve reliefs?

The valve pocket depths vary by make and application. Most FPS Series forged pistons have valve relief's that are .030 deeper than stock. The SRS series are designed for camshafts in the .640" to 670" lift range for small blocks and about .780" lift for big blocks. This can vary somewhat due to alteration to the duration and centerlines of the camshafts. The PRS series are, for the most part, supplied with either no valve relief's or with a minimal "locator pocket".

Can Probe pistons take NOS (how much)?

Now there's a loaded question! Standard weight Probe FPS and SRS Series are manufactured with sufficient deck thickness to handle even large nitrous systems. The ring lands are moved down to provide additional strength in that area. Having said that, NOTHING can protect a piston from a nitrous lean out. **It is not recommended that you use nitrous with the PRS Series pistons.**

Can Probe pistons take boost (how much)?

This is the same area as the Nitrous. As the minimum thickness is .200" in the standard weight pistons they are normally used in the 15 to 17 lbs. range with no problems. The same caveat applies for a leanout.

How much horsepower can Probe pistons handle?

There really is no limitation. Probe forged pistons (SRS and PRS Series) are machined on 2618-t6 blanks and can handle as much horsepower as any piston made by anyone. The truth is, it's all about the tune-up. If the mixture and timing are correct you'll never have a problem. If they are not.....

What will lighter pistons do for me?

Light pistons have several benefits. They reduce stress on the rotating assembly and block, especially at high rpm. They allow quicker wind up of the engine, much the same as a light flywheel would. They make balancing easier, reducing or eliminating the need for expensive Mallory metal.

FREQUENTLY ASKED QUESTIONS

QUESTIONS | ANSWERS

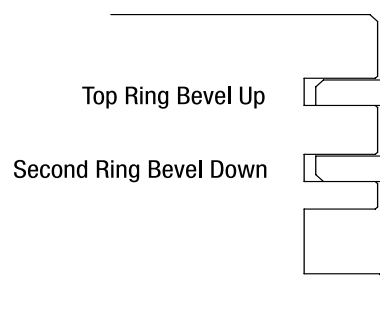
What ring end gap should I run?

Proper ring end gap is essential to achieve maximum power output. Too large a gap can allow combustion pressure to escape past the rings. Too small a gap can cause the rings to end butt and damage to the rings and cylinder walls. Both conditions will reduce the performance level of the engine. The proper end gap increases with the power output of the engine. Please use the following formula.

Top ring multiply the bore size by .004 (i.e. $4.000 \times .004 = .016$)
Second ring add .003 to top ring calculation (i.e. $4.000 \times .004 + .003 = .019$)
For power adders increase gap by .005

Which way do the rings go?

The easiest way to tell is to look at the bevel on the inside edge of the ring. The next process is to decide the direction the ring is going when it does its work. So the bevel on the inside edge of the top ring should face the top of the piston, which will force the ring out under compression. The second ring is there to scrape oil off the cylinder wall as it travels down. Therefore install the second ring with the bevel facing the bottom of the piston.



How many Spiro-locks do they take?

With the exception of a few specialty pistons, all Probe pistons use two spiro-locks per side. Never leave one out. That would allow the pin to hammer its way out of the piston. That would not be a good thing.

How do you install Spiro-locks?

Firmly grasp the ends of the Spiro-locks and pull them apart until the lock looks sort of like the threads on a screw. Put one tip into the receiving groove of the piston and twist it in. It sounds a lot easier than it is, but be patient and make sure they are each fully seated in the groove.

How do you remove Spiro-locks?

Magic? Or simple perseverance. Use a scribe, or the sharpened point of a small screwdriver to get behind the tab on the end of the spiro-locks. Pry the tip out and simply pull it straight out of the groove.

How far down is the top ring?

Where it is physically possible the standard is a minimum of .200" for small block and .350 for Clevalands and Chevy and Ford big blocks. If this dimension is a cause for concern please call our techs for more information.

How thick is the deck of the piston?

The FPS Series pistons normally run deck thicknesses in the .350" + range. The SRS series usually utilizes a deck of about .200", The PRS series are as thin as .150".

How much RPM can Probe pistons handle?

There is no practical limit for RPM. In general the higher the RPM the lighter the piston should be (33 ounces at 10,000 rpm is 20 TONS). For the SRS Series pistons 8,500 rpm is common.

350 - 5.7 ROD - FLAT TOP - LIGHTWEIGHT

Stroke	Rod	C/H	Bore	Weight	Compression Ratio computed with .010 deck and .038 head gasket				Part Number	Ring Set
--------	-----	-----	------	--------	--	--	--	--	-------------	----------

58.0cc 64.0cc 68.0cc 76.0cc

3.480	5.700	1.563	4.030	490	11.04	10.27	9.82	9.04	L2256F-030	315-0036
			4.040	500	11.08	10.31	9.86	9.07	L2256F-040	
			4.060	510	11.17	10.39	9.93	9.14	L2256F-060	



**LIGHTWEIGHT
FULL FLOAT PIN!**

Ring Grooves 1/16 1/16 3/16
Valve Relief Volume 2.5cc

Note: L2256F is a special lightweight design for circle track
 - .927 x 2.5 wrist pin with double spiral locks
 - 1/16 1/16 3/16 Race Rings
 - Shallow valve reliefs for higher compression

350 - 5.7 ROD - FLAT TOP

Stroke	Rod	C/H	Bore	Weight	Compression Ratio computed with .010 deck and .038 head gasket				Part Number	Ring Set
--------	-----	-----	------	--------	--	--	--	--	-------------	----------

58.0cc 64.0cc 68.0cc 76.0cc

3.480	5.700	1.563	4.000	516	10.82	10.00	9.51	8.67	P2256F-STD	40564CP
			4.030	536	10.95	10.12	9.63	8.78	P2256F-030	
			4.040	541	10.99	10.16	9.67	8.81	P2256F-040	
			4.060	545	11.08	10.24	9.74	8.88	P2256F-060	



Ring Grooves 5/64 5/64 3/16
Valve Relief Volume 4.0cc

350 - 5.7 ROD - DISH TOP

Stroke	Rod	C/H	Bore	Weight	Compression Ratio computed with .010 deck and .038 head gasket				Part Number	Ring Set
--------	-----	-----	------	--------	--	--	--	--	-------------	----------

58.0cc 64.0cc 68.0cc 76.0cc

3.480	5.700	1.562	4.000	493	9.58	9.00	9.65	8.04	P2403F-STD	40564CP
			4.030	514	9.70	9.11	8.75	8.13	P2403F-030	
			4.040	518	9.74	9.14	8.79	8.17	P2403F-040	
			4.060	524	9.81	9.21	8.86	8.23	P2403F-060	



Ring Grooves 5/64 5/64 3/16
Dish Volume 12.5cc



CHEVY

350 - 5.7 ROD - DISH TOP

Stroke	Rod	C/H	Bore	Weight	Compression Ratio computed with .010 deck and .038 head gasket				Part Number	Ring Set
					58.0cc	64.0cc	68.0cc	76.0cc		
3.480	5.700	1.560	4.000	486	8.75	8.26	7.97	7.46	P2441F-STD	40564CP
			4.030	498	8.86	8.37	8.07	7.55	P2441F-030	
			4.040	504	8.89	8.40	8.10	7.58	P2441F-040	
			4.060	513	8.96	8.47	8.17	7.64	P2441F-060	



Ring Grooves 5/64 5/64 3/16
Dish Volume 20.3cc

383 - 5.7 ROD - FLAT TOP

Stroke	Rod	C/H	Bore	Weight	Compression Ratio computed with .010 deck and .038 head gasket				Part Number	Ring Set
					58.0cc	64.0cc	68.0cc	76.0cc		
3.750	5.700	1.425	4.000	514	11.45	10.66	10.20	9.39	P3831F-STD	40564CP
			4.030	528	11.58	10.79	10.32	9.50	P3831F-030	
			4.040	534	11.63	10.83	10.36	9.54	P3831F-040	
			4.060	541	11.72	10.91	10.44	9.62	P3831F-060	



Ring Grooves 5/64 5/64 3/16
Valve Relief Volume 4.0cc

Note: P3831F is designed for use with 5.700 length rod and 3.750" stroke.

383 - 5.7 ROD - DISH TOP

Stroke	Rod	C/H	Bore	Weight	Compression Ratio computed with .010 deck and .038 head gasket				Part Number	Ring Set
					58.0cc	64.0cc	68.0cc	76.0cc		
3.750	5.700	1.425	4.000	460	9.19	8.69	8.39	7.85	P3832F-STD	40564CP
			4.030	477	9.31	8.80	8.49	7.94	P3832F-030	
			4.040	490	9.35	8.83	8.53	7.98	P3832F-040	
			4.060	523	9.42	8.90	8.59	8.04	P3832F-060	



Ring Grooves 5/64 5/64 3/16
Dish Volume 22.0cc

Note: P3831F is designed for use with 5.700 length rod and 3.750" stroke.



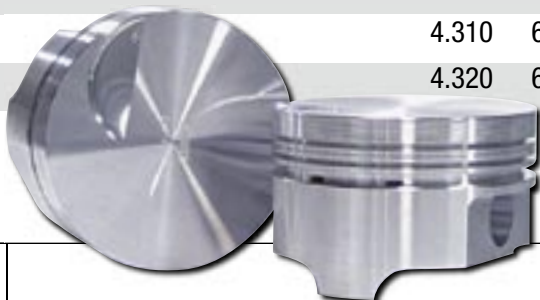
LS1 - 6.098 ROD - FLAT TOP

Stroke	Rod	C/H	Bore	Weight	Compression Ratio computed with .010 deck and .038 head gasket				Part Number	Ring Set
					59.0cc	64.0cc	66.0cc	76.0cc		
3.622	6.098	1.340	3.902	376	10.68	10.06	9.83	8.85	P2600F-003	315-0037
Ring Grooves 1.5 1.5 3mm										
Valve Relief Volume 3.0cc										



454 - 6.135 ROD - FLAT TOP

Stroke	Rod	C/H	Bore	Weight	Compression Ratio computed with .010 deck and .038 head gasket				Part Number	Ring Set
					106.0cc	112.0cc	118.0cc	124.0cc		
4.000	6.135	1.640	4.250	623	8.32	7.98	7.66	7.38	P2377F-STD	40203CP
			4.280	625	8.41	8.07	7.75	7.46	P2377F-030	
			4.290	632	8.44	8.10	7.78	7.49	P2377F-040	
			4.310	638	8.51	8.16	7.84	7.54	P2377F-060	
			4.320	640	8.77	8.41	8.08	7.78	P2377F-070	50722
Ring Grooves 5/64 5/64 3/16										
Valve Relief Volume 3.0cc										



454 - 6.135 ROD - DOME TOP

Stroke	Rod	C/H	Bore	Weight	Compression Ratio computed with .010 deck and .038 head gasket				Part Number	Ring Set
					106.0cc	112.0cc	118.0cc	124.0cc		
4.000	6.135	1.645	4.250	623	10.05	9.54	9.09	8.68	P2465F-STD	40203CP
			4.280	638	10.16	9.65	9.19	8.78	P2465F-030	
			4.290	643	10.20	9.68	9.22	8.81	P2465F-040	
			4.310	653	10.27	9.76	9.29	8.87	P2465F-060	
			4.320	655	10.31	9.79	9.32	8.91	P2465F-070	50722
Ring Grooves 5/64 5/64 3/16										
Dome Volume 18.0cc										





302 - 5.090 ROD - DISH TOP

Stroke	Rod	C/H	Bore	Weight	Compression Ratio computed with .010 deck and .038 head gasket				Part Number	Ring Set
					58.0cc	61.0cc	64.0cc	68.0cc		
3.000	5.090	1.605	4.000	516	8.41	8.15	7.90	7.60	P2305F-STD	40564CP
			4.030	520	8.51	8.24	8.00	7.69	P2305F-030	
			4.040	523	8.54	8.27	8.03	7.72	P2305F-040	



Ring Grooves 5/64 5/64 3/16
Dish Volume 12.2cc

302 - 5.155 ROD - FLAT TOP

Stroke	Rod	C/H	Bore	Weight	Compression Ratio computed with .010 deck and .038 head gasket				Part Number	Ring Set
					58.0cc	61.0cc	64.0cc	68.0cc		
3.000	5.155	1.540	4.030	540	9.57	9.19	8.84	8.41	P3021F-030	40564CP
			4.040	542	9.61	9.23	8.88	8.45	P3021F-040	



Ring Grooves 5/64 5/64 3/16
Valve Relief Volume 4.0cc

Note: P3021F (Boss Combo) is designed for use with 5.155 boss or 289 length rod and 3" stroke.

302 - 5.090 ROD - FLAT TOP

Stroke	Rod	C/H	Bore	Weight	Compression Ratio computed with .010 deck and .038 head gasket				Part Number	Ring Set
					58.0cc	61.0cc	64.0cc	68.0cc		
3.000	5.090	1.605	4.000	545	9.46	9.09	8.74	8.31	P2482F-STD	40564CP
			4.030	550	9.57	9.19	8.84	8.41	P2482F-030	
			4.040	552	9.61	9.23	8.88	8.45	P2482F-040	



Ring Grooves 5/64 5/64 3/16
Valve Relief Volume 4.0cc

5.0L - 302 - 5.090 - FLAT TOP

Stroke	Rod	C/H	Bore	Weight	Compression Ratio computed with .010 deck and .038 head gasket				Part Number	Ring Set
					58.0cc	61.0cc	64.0cc	68.0cc		
3.000	5.090	1.619	4.000	536	9.35	9.02	8.72	8.35	P2488F-STD	CR-6434
			4.030	553	9.46	9.12	8.82	8.44	P2488F-030	
			4.040	559	9.49	9.16	8.85	8.48	P2488F-040	



Ring Grooves 1.5 1.5 4 mm

Valve Relief Volume 4.0cc

351C - 5.788 ROD - FLAT TOP

Stroke	Rod	C/H	Bore	Weight	Compression Ratio computed with .010 deck and .038 head gasket				Part Number	Ring Set
					58.0cc	64.0cc	68.0cc	76.0cc		
3.500	5.788	1.647	4.020	582	10.98	10.22	9.77	9.00	P2379F-020	40564CP
			4.030	586	11.02	10.26	9.81	9.03	P2379F-030	
			4.040	594	11.07	10.30	9.85	9.07	P2379F-040	



Ring Grooves 5/64 5/64 3/16

Valve Relief Volume 3.0cc

351W - 5.956 ROD - DISH TOP

Stroke	Rod	C/H	Bore	Weight	Compression Ratio computed with .010 deck and .038 head gasket				Part Number	Ring Set
					58.0cc	61.0cc	64.0cc	68.0cc		
3.500	5.956	1.772	4.030	571	9.36	9.08	8.81	8.49	P2446F-030	40564CP
			4.040	581	9.40	9.11	8.85	8.52	P2446F-040	
			4.060	591	9.47	9.19	8.92	8.59	P2446F-060	



Ring Grooves 5/64 5/64 3/16

Dish Volume 15.9cc



FORD

393W - 5.956 ROD - DISH TOP

Stroke	Rod	C/H	Bore	Weight	Compression Ratio computed with .010 deck and .038 head gasket				Part Number	Ring Set
					58.0cc	61.0cc	64.0cc	68.0cc		
3.850	5.956	1.605	4.000	516	10.55	10.21	9.90	9.51	P2305F-STD	40564CP
			4.030	520	10.68	10.34	10.20	9.62	P2305F-030	
			4.040	523	10.72	10.38	10.06	9.66	P2305F-040	



Ring Grooves 5/64 5/64 3/16
Dish Volume 12.2cc

393W - 5.956 ROD - FLAT TOP

Stroke	Rod	C/H	Bore	Weight	Compression Ratio computed with .010 deck and .038 head gasket				Part Number	Ring Set
					58.0cc	61.0cc	64.0cc	68.0cc		
3.850	5.956	1.605	4.000	545	11.73	11.31	10.92	10.44	P2482F-STD	40564CP
			4.030	550	11.87	11.44	11.05	10.57	P2482F-030	
			4.040	552	11.91	11.49	11.09	10.61	P2482F-040	



Ring Grooves 5/64 5/64 3/16
Valve Relief Volume 4.0cc

460 - 6.605 ROD - DISH TOP

Stroke	Rod	C/H	Bore	Weight	Compression Ratio computed with .010 deck and .038 head gasket			Part Number	Ring Set
					74.0cc	86.0cc	100.0cc		
3.850	6.605	1.756	4.390	663	9.31	8.50	7.74	P2404F-030	40843CP
			4.420	674	9.41	8.60	7.83	P2404F-060	



Ring Grooves 5/64 5/64 3/16
Dish Volume 24.4cc

BUICK



BUICK V6 DISH TOP

- Forged of 2618 High Strength Alloy
- .940 x 2.500 Wrist Pins Included
- Pins, Pin Fitting, and Spiral Locks Included



Compression Ratio computed with
.010 deck and .038 head gasket

Bore	Weight	48.0cc	Part Number	Ring Set
V6 - 3.400 Stroke - 5.960 Rod - 1.850 C/H - .940 x 2.500				
3.820	TBA		14477-020	315-0011 Ring Grooves 1/16 1/16 3/16
3.830	TBA	8.00	14477-030	Dish Volume -29.5cc
3.840	TBA		14477-040	

CUSTOM PISTONS

Don't See What Your Looking For?
Probe Can Manufacture Custom
Pistons For ANY Configuration,
From 4 Pieces to 4,000 Pieces! For
More Information, Call To Speak To Our Technical Staff.



ROUSH TESTED, FORD APPROVED



In a test by Roush, for Ford Racing Technology, Probe Forged Pistons endured 6 hours continuous Dyno test from 4,000 to 7,000 rpm with a variety of load conditions. The result, (pictured on left) shows the durability of our DURAPLEX© skirt design! The skirt reveals perfect consistent cylinder wall contact and virtually no wear. As a result Probe Forged Pistons are used in all Ford High Performance Crate Engines! Contact our tech dept for more information.



LS1 & LS6 - FLAT TOP

- Forged of 2618 High Strength Alloy
- Pins, Pin Fitting, and Spiral Locks Included

Bore	Weight	64.0cc	66.0cc	70.0cc	Part Number	Ring Set
LS1 - 3.622 Stroke - 6.125 Rod - 1.315 C/H - .927 x 2.500 118 Gram Pin						
3.902	471	10.20	9.94	9.46	14217-003	315-0037 Ring Grooves 1.5 1.5 3mm Valve Relief Volume 3.0cc
LS1 - 3.622 Stroke - 6.125 Rod - 1.295 C/H - .927 x 2.500 118 Gram Pin						
4.000	385	10.58	10.31	9.82	14509-STD	CR-1009 Ring Grooves 1.5 1.5 3mm Valve Relief Volume 3.0cc
4.030	396	10.71	10.44	9.94	14509-030	Valve Relief Volume 3.0cc
LS1 - 3.900 Stroke - 6.125 Rod - 1.175 C/H - .927 x 2.500 118 Gram Pin						
3.902	339	11.48	11.19	10.66	14228-003	315-0037 Ring Grooves 1.5 1.5 3mm Valve Relief Volume 3.0cc
LS1 - 4.000 Stroke - 6.200 Rod - 1.050 C/H - .927 x 2.500 118 Gram Pin						
3.902	322	11.16	10.88	10.35	14230-003	315-0037 Ring Grooves 1.5 1.5 3mm Valve Relief Volume 3.0cc

CUSTOM PISTONS

Don't See What Your Looking For?
 Probe Can Manufacture Custom
 Pistons For ANY Configuration,
 From 4 Pieces to 4,000 Pieces! For
 More Information, Call To Speak To Our Technical Staff.



WRIST PIN UPGRADE

For Added Lightweight & Durability
 Order Optional Tool Steel Pins
 .927 x .090 Wall x 2.500 Part #11110
 .927 x .120 Wall x 2.500 Part #11113
Now! Upgrade For Minimal Charge!



CHEVY



LS1 & LS6 REVERSE DOME

- Forged of 2618 High Strength Alloy
- Pins, Pin Fitting, and Spiral Locks Included

Bore	Weight	64.0cc	66.0cc	70.0cc	Part Number	Ring Set
LS1 - 3.622 Stroke - 6.125 Rod - 1.315 C/H - .927 x 2.500 118 Gram Pin						
3.902	367	9.00	8.80	8.42	14222-003	315-0037 Ring Grooves 1.5 1.5 3mm - .010 deck and .057 gasket Dish Volume 13.2cc
LS1 - 3.622 Stroke - 6.125 Rod - 1.295 C/H - .927 x 2.500 118 Gram Pin						
4.000	400	10.06	8.86	8.50	14510-STD	CR-1009 Ring Grooves 1.5 1.5 3mm .010 deck and .038 gasket
4.030	408	9.17	8.97	8.60	14510-030	Dish Volume 16.0cc
LS1 - 3.900 Stroke - 6.125 Rod - 1.175 C/H - .927 x 2.500 118 Gram Pin						
3.902	340	9.00	8.81	8.45	14229-003	315-0037 Ring Grooves 1.5 1.5 3mm - .010 deck and .057 gasket Dish Volume 19.3cc
LS1 - 3.900 Stroke - 6.125 Rod - 1.155 C/H - .927 x 2.500 118 Gram Pin						
4.000	374	10.57	10.32	9.86	14512-STD	CR-1009 Ring Grooves 1.5 1.5 3mm .010 deck and .038 gasket
4.030	379	10.70	10.45	9.98	14512-030	Dish Volume 8.5cc
4.000	369	9.05	8.87	8.52	14513-STD	Ring Grooves 1.5 1.5 3mm
4.030	374	9.16	8.98	8.63	14513-030	Dish Volume 22.4cc
LS1 - 4.000 Stroke - 6.200 Rod - 1.050 C/H - .927 x 2.500 118 Gram Pin						
3.902	311	8.99	8.80	8.46	14231-003	315-0037 Ring Grooves 1.5 1.5 3mm - .010 deck and .057 gasket Dish Volume 21.4cc
LS1 - 4.000 Stroke - 6.200 Rod - 1.030 C/H - .927 x 2.500 118 Gram Pin						
4.000	346	10.57	10.33	9.88	14514-STD	CR-1009 Ring Grooves 1.5 1.5 3mm .010 deck and .038 gasket
4.030	350	10.70	10.46	10.00	14514-030	Dish Volume 10.4cc
4.000	335	9.05	8.87	8.53	14515-STD	Ring Grooves 1.5 1.5 3mm
4.030	339	9.16	8.98	8.64	14515-030	Dish Volume 24.7cc

CUSTOM PISTONS

Don't See What Your Looking For?
Probe Can Manufacture Custom
Pistons For ANY Configuration,
From 4 Pieces to 4,000 Pieces! For
More Information, Call To Speak To Our Technical Staff.



WRIST PIN UPGRADE

For Added Lightweight & Durability
Order Optional Tool Steel Pins
.927 x .090 Wall x 2.500 Part #11110
.927 x .120 Wall x 2.500 Part #11113
Now! Upgrade For Minimal Charge!



**ULTRALIGHT
NOW AVAILABLE
IN PRS SERIES!**



350 & 383 ULTRALIGHT - FLAT TOP

- Forged of 2618 High Strength Alloy
- No Valve Reliefs
- Pins, Pin Fitting, and Spiral Locks Included
- Side Gas Points

NOTE: These pistons come without valve releases.

Compression Ratio computed with .010 deck and .038 head gasket								
Bore	Weight	58.0cc	64.0cc	68.0cc	76.0cc	Part Number	Ring Set	
350 - 3.480 Stroke - 6.000 Rod - 1.260 C/H - .927 x 2.250 88 Gram Pin								
4.000	331	11.46	10.53	10.00	9.07	10445-STD	315-0015	Ring Grooves .043 .043 3mm
4.030	335	11.59	10.66	10.12	9.18	10445-030		Valve Relief Volume 0.0cc
4.040	337	11.63	10.70	10.16	9.22	10445-040		
4.060	341	11.72	10.78	10.24	9.29	10445-060		
350 - 3.480 Stroke - 6.125 Rod - 1.125 C/H - .927 x 2.250 88 Gram Pin								
4.000	325	11.46	10.53	10.00	9.07	10450-STD	315-0015	Ring Grooves .043 .043 3mm
4.030	329	11.59	10.66	10.12	9.18	10450-030		Valve Relief Volume 0.0cc
4.040	331	11.63	10.70	10.16	9.22	10450-040		
4.060	335	11.72	10.78	10.24	9.29	10450-060		
350 - 3.480 Stroke - 6.250 Rod - 1.000 C/H - .927 x 2.250 88 Gram Pin								
4.000	316	11.46	10.53	10.00	9.07	10457-STD	315-0015	Ring Grooves .043 .043 3mm
4.030	320	11.59	10.66	10.12	9.18	10457-030		Valve Relief Volume 0.0cc
4.040	322	11.63	10.70	10.16	9.22	10457-040		
4.060	326	11.72	10.78	10.24	9.29	10457-060		
383 - 3.750 Stroke - 6.000 Rod - 1.125 C/H - .927 x 2.250 88 Gram Pin								
4.000	325	12.27	11.28	10.70	9.71	10450-STD	315-0015	Ring Grooves .043 .043 3mm
4.030	329	12.41	11.41	10.83	9.83	10450-030		Valve Relief Volume 0.0cc
4.040	331	12.46	11.46	10.88	9.87	10450-040		
4.060	335	12.56	11.55	10.98	9.95	10450-060		
383 - 3.750 Stroke - 6.125 Rod - 1.000 C/H - .927 x 2.250 88 Gram Pin								
4.000	316	12.27	11.28	10.70	9.71	10457-STD	315-0015	Ring Grooves .043 .043 3mm
4.030	320	12.41	11.41	10.83	9.83	10457-030		Valve Relief Volume 0.0cc
4.040	322	12.46	11.46	10.88	9.87	10457-040		
4.060	326	12.56	11.55	10.98	9.95	10457-060		

CHEVY



350 & 383 FLAT TOP - MOLECULITE

- New Low Drag Ring Pack
- Forged of 2618 High Strength Alloy
- Pins, Pin Fitting, and Spiral Locks Included

**NEW
LIGHTWEIGHT
DESIGN!**



Compression Ratio computed with
.010 deck and .038 head gasket

Bore	Weight	58.0cc	64.0cc	68.0cc	76.0cc	Part Number	Ring Set
350 - 3.480 Stroke - 5.700 Rod - 1.560 C/H - .927 x 2.500 118 Gram Pin							
4.000	389	10.69	9.96	9.53	8.78	14103-STD	315-0066 Ring Grooves 1.2 1.5 3mm
4.030	395	10.82	10.08	9.64	8.89	14103-030	Valve Relief Volume 4cc
4.040	397	10.86	10.12	9.68	8.92	14103-040	
4.060	399	10.94	10.20	9.76	8.99	14103-060	
350 - 3.480 Stroke - 6.000 Rod - 1.260 C/H - .927 x 2.500 118 Gram Pin							
4.000	346	10.69	9.96	9.53	8.78	14104-STD	315-0066 Ring Grooves 1.2 1.5 3mm
4.030	351	10.82	10.08	9.64	8.89	14104-030	Valve Relief Volume 4cc
4.040	353	10.86	10.12	9.68	8.92	14104-040	
4.060	355	10.94	10.20	9.76	8.99	14104-060	
383 - 3.750 Stroke - 5.700 Rod - 1.425 C/H - .927 x 2.500 118 Gram Pin							
4.000	376	11.45	10.66	10.20	9.39	14105-STD	315-0066 Ring Grooves 1.2 1.5 3mm
4.030	381	11.58	10.79	10.32	9.50	14105-030	Valve Relief Volume 4cc
4.040	383	11.63	10.83	10.36	9.54	14105-040	
4.060	385	11.72	10.91	10.44	9.62	14105-060	
383 - 3.750 Stroke - 6.000 Rod - 1.125 C/H - .927 x 2.500 118 Gram Pin							
4.000	343	11.45	10.66	10.20	9.39	14106-STD	315-0066 Ring Grooves 1.2 1.5 3mm
4.030	348	11.58	10.79	10.32	9.50	14106-030	Valve Relief Volume 4cc
4.040	350	11.63	10.83	10.36	9.54	14106-040	
4.060	352	11.72	10.91	10.44	9.62	14106-060	

CUSTOM PISTONS

Don't See What Your Looking For?
Probe Can Manufacture Custom
Pistons For ANY Configuration,
From 4 Pieces to 4,000 Pieces! For
More Information, Call To Speak To Our Technical Staff.



WRIST PIN UPGRADE

For Added Lightweight & Durability
Order Optional Tool Steel Pins
.927 x .090 Wall x 2.500 Part #11110
.927 x .120 Wall x 2.500 Part #11113
Now! Upgrade For Minimal Charge!





CHEVY

350, 363 & 383 FLAT TOP



- Forged of 2618 High Strength Alloy
- Pins, Pin Fitting, and Spiral Locks Included

Compression Ratio computed with .010 deck and .038 head gasket								
Bore	Weight	58.0cc	64.0cc	68.0cc	76.0cc	Part Number	Ring Set	
350 - 3.480 Stroke - 5.700 Rod - 1.560 C/H - .927 x 2.500 118 Gram Pin								
4.000	504	10.82	10.00	9.51	8.67	12334-STD	315-0036	Ring Grooves 1/16 1/16 3/16
4.030	506	10.95	10.12	9.63	8.78	12334-030		Valve Relief Volume 4cc
4.040	508	10.99	10.16	9.67	8.81	12334-040		
4.060	510	11.08	10.24	9.74	8.88	12334-060		
350 - 3.480 Stroke - 6.000 Rod - 1.260 C/H - .927 x 2.500 118 Gram Pin								
4.000	460	10.82	10.00	9.51	8.67	12335-STD	315-0036	Ring Grooves 1/16 1/16 3/16
4.030	462	10.95	10.12	9.63	8.78	12335-030		Valve Relief Volume 4cc
4.040	464	10.99	10.16	9.67	8.81	12335-040		
4.060	466	11.08	10.24	9.74	8.88	12335-060		
363 - 3.562 Stroke - 6.000 Rod - 1.219 C/H - .927 x 2.500 118 Gram Pin								
4.030	408	11.05	10.29	9.85	9.08	14210-030	315-0036	Ring Grooves 1/16 1/16 3/16
4.040	409	11.09	10.33	9.89	9.11	14210-040		Valve Relief Volume 4cc
4.060	424	11.18	10.41	9.96	9.18	14210-060		
383 - 3.750 Stroke - 5.700 Rod - 1.425 C/H - .927 x 2.500 118 Gram Pin								
4.000	487	11.45	10.66	10.20	9.39	12336-STD	315-0036	Ring Grooves 1/16 1/16 3/16
4.030	489	11.58	10.79	10.32	9.50	12336-030		Valve Relief Volume 4cc
4.040	491	11.63	10.83	10.36	9.54	12336-040		
4.060	493	11.72	10.91	10.44	9.62	12336-060		
383 - 3.750 Stroke - 6.000 Rod - 1.125 C/H - .927 x 2.500 118 Gram Pin								
4.000	413	11.45	10.66	10.20	9.39	12337-STD	315-0033	Ring Grooves 1/16 1/16 1/8
4.030	415	11.58	10.79	10.32	9.50	12337-030		Valve Relief Volume 4cc
4.040	417	11.63	10.83	10.36	9.54	12337-040		
4.060	419	11.72	10.91	10.44	9.62	12337-060		

CHEVY



350 & 383 REVERSE DOME

- Forged of 2618 High Strength Alloy
- Pins, Pin Fitting, and Spiral Locks Included

Compression Ratio computed with
.010 deck and .038 head gasket

Bore	Weight	Compression Ratio				Part Number	Ring Set	
		58.0cc	64.0cc	68.0cc	76.0cc			
350 - 3.480 Stroke - 5.700 Rod - 1.560 C/H - .927 x 2.500 118 Gram Pin								
4.000	487	9.43	8.87	8.43	7.93	12342-STD	315-0036	Ring Grooves 1/16 1/16 3/16
4.030	489	9.55	8.97	8.55	8.03	12342-030		Dish Volume 13.8cc
4.040	491	9.58	9.01	8.58	8.06	12342-040		
4.060	493	9.66	9.07	8.66	8.13	12342-060		
350 - 3.480 Stroke - 6.000 Rod - 1.260 C/H - .927 x 2.500 118 Gram Pin								
4.000	451	9.91	9.28	8.91	8.26	12343-STD	315-0036	Ring Grooves 1/16 1/16 3/16
4.030	453	10.03	9.39	9.02	8.36	12343-030		Dish Volume 9.8cc
4.040	455	10.07	9.43	9.05	8.39	12343-040		
4.060	457	10.15	9.51	9.13	8.46	12343-060		
383 - 3.750 Stroke - 5.700 Rod - 1.425 C/H - .927 x 2.500 118 Gram Pin								
4.000	444	9.36	8.84	8.52	7.96	12344-STD	315-0036	Ring Grooves 1/16 1/16 3/16
4.030	446	9.47	8.94	8.63	8.06	12344-030		Dish Volume 20.4cc
4.040	448	9.51	8.98	8.66	8.09	12344-040		
4.060	450	9.59	9.05	8.73	8.16	12344-060		
383 - 3.750 Stroke - 6.000 Rod - 1.125 C/H - .927 x 2.500 118 Gram Pin								
4.000	407	10.22	9.60	9.22	8.57	12345-STD	315-0033	Ring Grooves 1/16 1/16 1/8
4.030	409	10.35	9.71	9.34	8.67	12345-030		Dish Volume 12.8cc
4.040	411	10.39	9.75	9.37	8.71	12345-040		
4.060	413	10.47	9.83	9.45	8.78	12345-060		

CUSTOM PISTONS

Don't See What Your Looking For?
Probe Can Manufacture Custom
Pistons For ANY Configuration,
From 4 Pieces to 4,000 Pieces! For
More Information, Call To Speak To Our Technical Staff.



WRIST PIN UPGRADE

For Added Lightweight & Durability
Order Optional Tool Steel Pins
.927 x .090 Wall x 2.500 Part #11110
.927 x .120 Wall x 2.500 Part #11113

Now! Upgrade For Minimal Charge!





CHEVY

350 - DOME TOP

- Forged of 2618 High Strength Alloy
- Pins, Pin Fitting, and Spiral Locks Included



Volume computed with
38 head gasket

Bore	Weight	58.0cc	64.0cc	68.0cc	76.0cc	Part Number	Ring Set	
350 - 3.480 Stroke - 5.700 Rod - 1.560 C/H - .927 x 2.500 118 Gram Pin								
4.000	539	11.91	11.00	10.47	9.57	13721-STD	315-0036	Ring Grooves 1/16 1/16 3/16
4.030	541	12.04	11.12	10.59	9.68	13721-030		Dome Volume 3.5cc
4.040	543	12.09	11.17	10.63	9.72	13721-040		
4.060	545	12.18	11.25	10.72	9.79	13721-060		
350 - 3.480 Stroke - 6.000 Rod - 1.260 C/H - .927 x 2.500 118 Gram Pin								
4.000	456	11.91	11.00	10.47	9.57	13720-STD	315-0033	Ring Grooves 1/16 1/16 1/8
4.030	458	12.04	11.12	10.59	9.68	13720-030		Dome Volume 3.5cc
4.040	460	12.09	11.17	10.63	9.72	13720-040		
4.060	462	12.18	11.25	10.72	9.79	13720-060		
350 - 3.480 Stroke - 5.700 Rod - 1.560 C/H - .927 x 2.500 118 Gram Pin								
							Hollow Dome	
4.030	479	13.94	12.71	12.01	10.84	13722-030	315-0036	Ring Grooves 1/16 1/16 3/16
4.040	480	13.99	12.76	12.06	10.88	13722-040		Dome Volume 12.5cc
4.060	482	14.09	12.85	12.15	10.96	13722-060		
350 - 3.480 Stroke - 6.000 Rod - 1.260 C/H - .927 x 2.500 118 Gram Pin								
							Hollow Dome	
4.030	422	13.94	12.71	12.01	10.84	13723-030	315-0036	Ring Grooves 1/16 1/16 3/16
4.040	432	13.99	12.76	12.06	10.88	13723-040		Dome Volume 12.5cc
4.060	452	14.09	12.85	12.15	10.96	13723-060		
350 - 3.562 Stroke - 6.000 Rod - 1.219 C/H - .927 x 2.500 118 Gram Pin								
							Hollow Dome	
4.030	409	13.90	12.70	12.02	10.87	14209-030	315-0036	Ring Grooves 1/16 1/16 3/16
4.040	410	13.95	12.75	12.06	10.91	14209-040		Dome Volume 11.1cc
4.060	424	14.05	12.84	12.15	10.99	14209-060		



350 - DOME TOP

Designed for Dart Sportsman 49cc cylinder head

- Forged of 2618 High Strength Alloy
- Pins, Pin Fitting, and Spiral Locks Included



Compression Ratio computed with
.010 deck and .038 head gasket

Bore	Weight	49.0cc	Part Number	Ring Set	
350 - 3.480 Stroke - 5.700 Rod - 1.560 C/H - .927 x 2.500 118 Gram Pin					
4.030	TBA	13.74	14710-030	315-0033	Ring Grooves 1/16 1/16 1/8
4.040	TBA	13.79	14710-040	315-0033	Valve Relief Volume 1.7cc
4.060	TBA	13.90	14710-060	315-0033	
350 - 3.480 Stroke - 6.000 Rod - 1.260 C/H - .927 x 2.500 118 Gram Pin					
4.030	TBA	13.74	14709-030	315-0033	Ring Grooves 1/16 1/16 1/8
4.040	TBA	13.79	14709-040	315-0033	Valve Relief Volume 1.7cc
4.060	TBA	13.90	14709-060	315-0033	

383 - DOME TOP

- Forged of 2618 High Strength Alloy
- Pins, Pin Fitting, and Spiral Locks Included



Compression Ratio computed with
.010 deck and .038 head gasket

Bore	Weight	58.0cc	64.0cc	68.0cc	76.0cc	Part Number	Ring Set	
383 - 3.750 Stroke - 5.700 Rod - 1.425 C/H - .927 x 2.500 118 Gram Pin								
4.000	520	13.53	12.42	11.79	10.71	13724-STD	315-0036	Ring Grooves 1/16 1/16 3/16
4.030	529	13.68	12.57	11.93	10.84	13724-030		Dome Volume 7.3cc
4.040	532	13.73	12.62	11.97	10.88	13724-040		
4.060	537	13.84	12.71	12.07	10.97	13724-060		
383 - 3.750 Stroke - 6.000 Rod - 1.125 C/H - .927 x 2.500 118 Gram Pin								
4.000	455	13.68	12.38	11.91	10.81	13719-STD	315-0033	Ring Grooves 1/16 1/16 1/8
4.030	457	13.84	12.53	12.05	10.94	13719-030		Dome Volume 8.0cc
4.040	459	13.89	12.58	12.09	10.98	13719-040		
4.060	461	13.99	12.67	12.18	11.06	13719-060		



CHEVY

377 & 400 FLAT TOP



- Forged of 2618 High Strength Alloy
- Pins, Pin Fitting, and Spiral Locks Included

Compression Ratio computed with .010 deck and .038 head gasket								
Bore	Weight	58.0cc	64.0cc	68.0cc	76.0cc	Part Number	Ring Set	
377 - 3.480 Stroke - 6.000 Rod - 1.260 C/H - .927 x 2.500 118 Gram Pin								
4.155	440	11.49	10.62	10.11	9.22	13954-030	315-0032	Ring Grooves 1/16 1/16 3/16
4.165	443	11.53	10.62	10.15	9.26	13954-040		Valve Relief Volume 4cc
400 - 3.750 Stroke - 5.700 Rod - 1.425 C/H - .927 x 2.500 118 Gram Pin								
4.125	505	12.17	11.24	10.70	9.76	12338-STD	315-0032	Ring Grooves 1/16 1/16 3/16
4.155	507	12.31	11.38	10.83	9.88	12338-030		Valve Relief Volume 4cc
4.165	509	12.35	11.42	10.87	9.92	12338-040		
400 - 3.750 Stroke - 6.000 Rod - 1.125 C/H - .927 x 2.500 118 Gram Pin								
4.125	448	12.17	11.24	10.70	9.76	12339-STD	315-0021	Ring Grooves 1/16 1/16 1/8
4.155	450	12.31	11.38	10.83	9.88	12339-030		Valve Relief Volume 4cc
4.165	452	12.35	11.42	10.87	9.92	12339-040		
400 - 3.750 Stroke - 6.000 Rod - 1.000 C/H - .927 x 2.500 118 Gram Pin								
4.155	TBA	12.24	12.23	11.64	10.06	14680-030	315-0032	Ring Grooves 1/16 1/16 3/16
4.165	TBA	12.29	12.28	11.68	10.65	14680-040		Valve Relief Volume 4cc

CUSTOM PISTONS

Don't See What Your Looking For?
Probe Can Manufacture Custom
Pistons For ANY Configuration,
From 4 Pieces to 4,000 Pieces! For
More Information, Call To Speak To Our Technical Staff.



WRIST PIN UPGRADE

For Added Lightweight & Durability
Order Optional Tool Steel Pins
.927 x .090 Wall x 2.500 Part #11110
.927 x .120 Wall x 2.500 Part #11113
Now! Upgrade For Minimal Charge!



CHEVY



400 REVERSE DOME

- Forged of 2618 High Strength Alloy
- Pins, Pin Fitting, and Spiral Locks Included



Compression Ratio computed with
.010 deck and .038 head gasket

Bore	Weight	58.0cc	64.0cc	68.0cc	76.0cc	Part Number	Ring Set	
400 - 3.750 Stroke - 5.700 Rod - 1.425 C/H - .927 x 2.500 118 Gram Pin								
4.155	481	10.59	9.96	9.68	8.92	12340-030	315-0032	Ring Grooves 1/16 1/16 3/16
4.165	483	10.63	10.00	9.62	8.95	12340-040		Dish Volume 15.0cc
400 - 3.750 Stroke - 6.000 Rod - 1.125 C/H - .927 x 2.500 118 Gram Pin								
4.155	435	10.59	9.96	9.68	8.92	12341-030	315-0021	Ring Grooves 1/16 1/16 1/8
4.165	437	10.63	10.00	9.62	8.95	12341-040		Dish Volume 15.0cc
400 - 3.750 Stroke - 5.700 Rod - 1.425 C/H - .927 x 2.500 118 Gram Pin								
4.155	486	9.78	9.25	8.93	8.35	13740-030	315-0032	Ring Grooves 1/16 1/16 3/16
4.165	490	9.82	9.28	8.96	8.38	13740-040		Dish Volume 22.5cc

CUSTOM PISTONS

Don't See What Your Looking For?
Probe Can Manufacture Custom
Pistons For ANY Configuration,
From 4 Pieces to 4,000 Pieces! For
More Information, Call To Speak To Our Technical Staff.



WRIST PIN UPGRADE

For Added Lightweight & Durability
Order Optional Tool Steel Pins
.927 x .090 Wall x 2.500 Part #11110
.927 x .120 Wall x 2.500 Part #11113
Now! Upgrade For Minimal Charge!





CHEVY



352, 377, 400 & 434 - DOME TOP

- Forged of 2618 High Strength Alloy
- Pins, Pin Fitting, and Spiral Locks Included

Compression Ratio computed with .010 deck and .038 head gasket								
Bore	Weight	58.0cc	64.0cc	68.0cc	76.0cc	Part Number	Ring Set	
352 - 3.250 Stroke - 6.000 Rod - 1.375 C/H - .927 x 2.500 118 Gram Pin								
4.155	TBA	13.70	12.51	11.83	10.69	14107-030	315-0032	Ring Grooves 1/16 1/16 3/16
4.165	TBA	13.75	12.55	11.87	10.73	14107-040		Dome Volume 12.5cc
377 - 3.480 Stroke - 6.000 Rod - 1.260 C/H - .927 x 2.500 118 Gram Pin								
4.155	486	12.95	11.94	11.36	10.36	13956-030	315-0032	Ring Grooves 1/16 1/16 3/16
4.165	493	13.00	11.99	11.40	10.40	13956-040		Dome Volume 5.2cc
400 - 3.750 Stroke - 5.700 Rod - 1.425 C/H - .927 x 2.500 118 Gram Pin								
4.155	502	13.79	12.71	12.09	11.03	13725-030	315-0032	Ring Grooves 1/16 1/16 3/16
4.165	504	13.84	12.76	12.29	11.07	13725-040		Dome Volume 4.8cc
400 - 3.750 Stroke - 6.000 Rod - 1.125 C/H - .927 x 2.500 118 Gram Pin								
4.125	488	13.63	12.57	11.96	10.81	13726-STD	315-0021	Ring Grooves 1/16 1/16 1/8
4.155	490	13.79	12.71	12.09	11.03	13726-030		Dome Volume 4.8cc
4.165	492	13.84	12.76	12.14	11.07	13726-040		
4.185	TBA	13.94	12.86	12.23	11.16	13726-060		
400 - 3.750 Stroke - 6.000 Rod - 1.125 C/H - .927 x 2.500 118 Gram Pin								
4.155	TBA	15.36	14.03	13.27	11.99	14108-030	315-0021	Ring Grooves 1/16 1/16 1/8
4.165	TBA	15.41	14.08	13.32	12.04	14108-040		Dome Volume 11.5cc
434 - 4.000 Stroke - 6.000 Rod - 1.000 C/H - .927 x 2.500 118 Gram Pin								
4.155	443	15.26	14.02	13.30	12.09	14109-030	315-0032	Ring Grooves 1/16 1/16 3/16
4.165	446	15.32	14.07	13.35	12.13	14109-040		Dome Volume 7.5cc



454 TO 540 - FLAT TOP

- Forged of 2618 High Strength Alloy
- Pins, Pin Fitting, and Spiral Locks Included

Compression Ratio computed with
.010 deck and .038 head gasket

Bore	Weight	106.0cc	112.0cc	118.0cc	124.0cc	Part Number	Ring Set
454 - 4.000 Stroke - 6.135 Rod - 1.645 C/H - .990 x 2.930 151 Gram Pin							
4.280	571	8.77	8.35	7.98	7.63	13727-030	315-0035 Ring Grooves 1/16 1/16 3/16
4.310	587	8.87	8.45	8.07	7.72	13727-060	Valve Relief Volume 3.0cc
4.320	589	8.90	8.48	8.10	7.75	13727-070	
4.350	594	9.00	8.57	8.19	7.84	13727-100	315-0003
4.375	594	9.08	8.65	8.27	7.91	13727-125	315-0018
4.470	660	9.40	8.96	8.56	8.19	14465-003	TBA
4.500	615	9.50	9.06	8.65	8.28	14465-033	315-0001
4.530	630	9.60	9.16	8.75	8.37	14465-063	
4.560	649	9.71	9.25	8.84	8.46	14465-093	
4.600	665	9.84	9.39	8.97	8.59	14465-133	315-0006
540 - 4.250 Stroke - 6.135 Rod - 1.520 C/H - .990 x 2.930 151 Gram Pin							
4.500	589	9.89	9.48	9.06	8.68	14464-033	315-0001
4.530	612	10.05	9.59	9.16	8.77	14464-063	
4.560	631	10.16	9.69	9.26	8.87	14464-093	
4.600	649	10.31	9.83	9.40	9.00	14464-133	315-0006

Continued on page 20



CHEVY



454 TO 540 - FLAT TOP

- Forged of 2618 High Strength Alloy
- Pins, Pin Fitting, and Spiral Locks Included

Compression Ratio computed with
.010 deck and .038 head gasket

Bore	Weight	106.0cc	112.0cc	118.0cc	124.0cc	Part Number	Ring Set	
454 - 4.000 Stroke - 6.385 Rod - 1.395 C/H - .990 x 2.930 151 Gram Pin								
4.280	523	8.77	8.35	7.98	7.63	13728-030	315-0035	Ring Grooves 1/16 1/16 3/16
4.310	534	8.87	8.45	8.07	7.72	13728-060		Valve Relief Volume 3.0cc
4.320	535	8.90	8.48	8.10	7.75	13728-070		
4.350	539	9.00	8.57	8.19	7.84	13728-100	315-0003	
4.375	545	9.08	8.65	8.27	7.91	13728-125	315-0018	
4.470	544	9.40	8.96	8.56	8.19	14463-003	TBA	
4.500	560	9.50	9.06	8.65	8.28	14463-033	315-0001	
4.530	577	9.60	9.16	8.75	8.37	14463-063		
4.560	594	9.71	9.25	8.84	8.46	14463-093		
4.600	614	9.84	9.39	8.97	8.59	14463-133	315-0006	
496 - 4.250 Stroke - 6.385 Rod - 1.270 C/H - .990 x 2.930 151 Gram Pin								
4.280	520	9.25	8.82	8.42	8.06	11371-030	315-0035	Ring Grooves 1/16 1/16 3/16
4.310	530	9.36	8.92	8.42	8.15	11371-060		Valve Relief Volume 3.0cc
4.320	540	9.39	8.95	8.55	8.15	11371-070		
4.350	546	9.50	9.15	8.65	8.27	11371-100	315-0003	
4.375	595	9.59	9.14	8.73	8.35	11371-125	315-0018	
4.470	523	9.93	9.46	9.04	8.65	14462-003	TBA	
4.500	540	10.04	9.57	9.14	8.75	14462-033	315-0001	
4.530	557	10.14	9.67	9.24	8.84	14462-063		
4.560	574	10.25	9.77	9.34	8.94	14462-093		
4.600	593	10.40	9.91	9.47	9.07	14462-133	315-0006	



454 TO 540 - MID DOME

- Forged of 2618 High Strength Alloy
- Pins, Pin Fitting, and Spiral Locks Included



Compression Ratio computed with
.010 deck and .038 head gasket

Bore	Weight	Compression Ratio				Part Number	Ring Set	
		106.0cc	112.0cc	118.0cc	124.0cc			
454 - 4.000 Stroke - 6.135 Rod - 1.645 C/H - .990 x 2.930 151 Gram Pin								
4.280	660	10.61	10.01	9.47	8.99	13976-030	315-0035	Ring Grooves 1/16 1/16 3/16
4.310	620	10.72	10.21	9.58	9.09	13976-060		Dome Volume 18.0cc
4.320	625	10.76	10.16	9.61	9.12	13976-070		
4.350	633	10.88	10.27	9.72	9.23	13976-100	315-0003	
4.375	695	10.98	10.36	9.81	9.31	13976-125	315-0018	
4.470	580	9.84	9.36	8.93	8.53	14495-003		Dome Volume 2.5cc
4.470	610	11.10	10.49	9.95	9.45	14469-003		Dome Volume 15.7cc
4.500	629	11.22	10.60	10.05	9.56	14469-033	315-0001	
4.530	643	11.34	10.72	10.16	9.66	14469-063		
4.560	667	11.45	10.83	10.27	9.76	14469-093		
4.600	675	11.61	10.98	10.41	9.90	14469-133	315-0006	



454 TO 540 - MID DOME

- Forged of 2618 High Strength Alloy
- Pins, Pin Fitting, and Spiral Locks Included

Compression Ratio computed with .010 deck and .038 head gasket								
Bore	Weight	106.0cc	112.0cc	118.0cc	124.0cc	Part Number	Ring Set	
540 - 4.250 Stroke - 6.135 Rod - 1.520 C/H - .990 x 2.930 151 Gram Pin								
4.500	TBA	11.14	10.56	10.04	9.57	14468-033	315-0001	Ring Grooves
4.530	TBA	11.26	10.68	10.15	9.68	14468-063		Dome Volume 9.1cc
4.560	TBA	11.38	10.79	10.26	9.78	14468-093		
4.600	TBA	11.53	10.94	10.41	9.92	14468-133	315-0006	
496 - 4.250 Stroke - 6.385 Rod - 1.270 C/H - .990 x 2.930 151 Gram Pin								
4.280	552	11.20	10.56	10.00	9.49	13729-030	315-0035	Ring Grooves 1/16 1/16 3/16
4.310	570	11.32	10.68	10.11	9.60	13729-060		Dome Volume 18.0cc
4.320	573	11.36	10.72	10.15	9.63	13729-070		
4.350	581	11.49	10.84	10.26	9.74	13729-100	315-0003	
4.375	TBA	11.59	10.94	10.36	9.83	13729-125	315-0018	
4.500	TBA	11.14	10.56	10.04	9.57	14466-033	315-0001	Dome Volume 9.1cc
4.530	TBA	11.26	10.68	10.15	9.68	14466-063		
4.560	TBA	11.38	10.79	10.26	9.78	14466-093		
4.600	TBA	11.53	10.94	10.41	9.92	14466-193	315-0006	
454 - 4.000 Stroke - 6.385 Rod - 1.395 C/H - .990 x 2.930 151 Gram Pin								
4.280	572	10.61	10.01	9.47	8.99	13731-030	315-0035	Ring Grooves 1/16 1/16 3/16
4.310	588	10.72	10.12	9.58	9.09	13731-060		Dome Volume 18.0cc
4.320	591	10.76	10.16	9.61	9.12	13731-070		
4.350	595	10.88	10.27	9.72	9.23	13731-100	315-0003	
4.375	TBA	10.98	10.36	9.81	9.31	13731-125	315-0018	
4.500	TBA	11.22	10.60	10.05	9.56	14467-033	315-0001	Dome Volume 15.7cc
4.530	TBA	11.34	10.72	10.16	9.66	14467-063		
4.560	TBA	11.45	10.83	10.27	9.76	14467-093		
4.600	TBA	11.61	10.98	10.41	9.90	14467-133	315-0006	

CHEVY



454 & 496 HIGH DOME

- Forged of 2618 High Strength Alloy
- Pins, Pin Fitting, and Spiral Locks Included

**NEW LIGHTWEIGHT
HOLLOW DOME
DESIGN!**



Compression Ratio computed with
.010 deck and .038 head gasket

Bore	Weight	Compression Ratio				Part Number	Ring Set	
		106.0cc	112.0cc	118.0cc	124.0cc			
454 - 4.000 Stroke - 6.135 Rod - 1.645 C/H - .990 x 2.930 151 Gram Pin								
4.280	610	14.94	13.78	12.78	11.92	13730-030	315-0035	Ring Grooves 1/16 1/16 3/16
4.310	625	15.10	13.92	12.92	12.05	13730-060		Dome Volume 47.0cc
4.320	627	15.15	13.97	12.96	12.09	13730-070	315-0003	
4.350	641	15.30	14.12	13.10	12.22	13730-100		
4.375	658	15.43	14.24	13.21	12.33	13730-125	315-0018	
454 - 4.000 Stroke - 6.385 Rod - 1.395 C/H - .990 x 2.930 151 Gram Pin								
4.280	532	14.94	13.78	12.78	11.92	14035-030	315-0035	Ring Grooves 1/16 1/16 3/16
4.310	572	15.10	13.92	12.92	12.05	14035-060		Dome Volume 47.0cc
4.320	575	15.15	13.97	12.96	12.09	14035-070	315-0003	
4.350	580	15.30	14.12	13.10	12.22	14035-100		
4.375	TBA	15.43	14.24	13.21	12.33	14035-125	315-0018	
496 - 4.250 Stroke - 6.385 - 1.270 C/H - .990 x 2.930 151 Gram Pin								
4.280	536	15.77	14.54	13.49	12.58	14032-030	315-0035	Ring Grooves 1/16 1/16 3/16
4.310	549	15.94	14.70	13.64	12.72	14032-060		Dome Volume 47.0cc
4.320	553	15.99	14.75	13.68	12.76	14032-070	315-0003	
4.350	568	16.16	14.90	13.83	12.90	14032-100		
4.375	TBA	16.29	15.03	13.95	13.02	14032-125	315-0018	

CUSTOM PISTONS

Don't See What Your Looking For?
Probe Can Manufacture Custom
Pistons For ANY Configuration,
From 4 Pieces to 4,000 Pieces! For
More Information, Call To Speak To Our Technical Staff.



WRIST PIN UPGRADE

For Added Lightweight & Durability
Order Optional Tool Steel Pins
.866 x .120 Wall x 2.500 Part #13995
Now! Upgrade For Minimal Charge!





502 - DOME TOP

- Forged of 2618 High Strength Alloy
- Pins, Pin Fitting, and Spiral Locks Included

Compression Ratio computed with .010 deck and .038 head gasket								
Bore	Weight	106.0cc	112.0cc	118.0cc	124.0cc	Part Number	Ring Set	
502 - 4.000 Stroke - 6.385 Rod - 1.395 C/H - .990 x 2.930 151 Gram Pin								
4.500	TBA	14.48	13.47	12.59	11.82	14035-250	315-0001	Ring Grooves
4.530	TBA	14.62	13.61	12.72	11.95	14035-280		Dome Volume 39.0cc
4.600	TBA	14.96	13.93	13.03	12.24	14035-350	315-0006	
4.625	TBA	15.08	14.04	13.14	12.34	14035-375		
540 - 4.250 Stroke - 6.385 Rod - 1.270 C/H - .990 x 2.930 151 Gram Pin								
4.500	TBA	16.09	14.92	13.90	13.02	14032-375	315-0001	Ring Grooves 1/16 1/16 3/16
4.530	TBA	16.25	15.07	14.05	13.15	14032-060		Dome Volume 43.0cc
4.600	TBA	16.63	15.42	14.38	13.47	14032-070	315-0006	
4.625	TBA	16.76	15.55	14.50	13.58	14032-100		



360 & 408 FLAT TOP

- Forged of 2618 High Strength Alloy
- Pins, Pin Fitting, and Spiral Locks Included
- Valve Reliefs For Most Aftermarket Heads



Compression Ratio computed with
.010 deck and .038 head gasket

Bore	Weight	55.0cc	60.0cc	65.0cc	70.0cc	Part Number	Ring Set
360 - 3.580 Stroke - 6.125 Rod - 1.664 C/H - Flat Top - .984 x 2.750 139 Gram Pin							
4.030	476	11.29	10.62	10.04	9.52	12346-030	315-0036 Ring Grooves 1/16 1/16 3/16
4.040	482	11.33	10.66	10.08	9.56	12346-040	Valve Relief Volume 5.5cc
408 - 4.000 Stroke - 6.125 Rod - 1.460 C/H - Flat Top - .984 x 2.750 139 Gram Pin							
4.030	460	12.51	11.76	11.11	10.53	13746-030	315-0036 Ring Grooves 1/16 1/16 3/16
4.040	466	12.55	11.81	11.15	10.57	13746-040	Valve Relief Volume 5.5cc

360 & 408 REVERSE DOME

- Forged of 2618 High Strength Alloy
- Pins, Pin Fitting, and Spiral Locks Included
- Valve Reliefs For Most Aftermarket Heads



Compression Ratio computed with
.010 deck and .038 head gasket

Bore	Weight	55.0cc	60.0cc	65.0cc	70.0cc	Part Number	Ring Set
360 - 3.580 Stroke - 6.125 Rod - 1.664 C/H - Dish Top - .984 x 2.750 139 Gram Pin							
4.030	476	10.03	9.51	9.04	8.63	12351-030	315-0036 Ring Grooves 1/16 1/16 3/16
4.040	482	10.07	9.55	9.08	8.66	12351-040	Dish Volume 14.5cc
408 - 4.000 Stroke - 6.125 Rod - 1.460 C/H - Dish Top - .984 x 2.750 139 Gram Pin							
4.030	454	10.72	10.18	9.69	9.25	13744-030	315-0036 Ring Grooves 1/16 1/16 3/16
4.040	466	10.77	10.22	9.73	9.29	13744-040	Dish Volume 17.5cc



CHRYSLER



440 & 493 FLAT TOP

- Forged of 2618 High Strength Alloy
- Pins, Pin Fitting, and Spiral Locks Included
- Valve Reliefs For Most Aftermarket Heads

Compression Ratio computed with .010 deck and .038 head gasket							
Bore	Weight	72.0cc	80.0cc	84.0cc	86.0cc	Part Number	Ring Set
440 - 3.750 Stroke - 6.768 Rod - 2.065 C/H - Flat Top - 1.094 x 2.750 158 Gram Pin							
4.350	730	11.17	10.33	9.97	9.79	12498-030	315-0003 Ring Grooves 1/16 1/16 3/16
4.360	732	11.21	10.37	10.00	9.83	12498-040	Valve Reliefs Volume 4cc
4.380	734	11.29	10.45	10.08	9.90	12498-060	
493 - 4.150 Stroke - 6.768 Rod - 1.865 C/H - Flat Top - 1.094 x 2.750 158 Gram Pin							
4.350	646	12.26	11.33	10.93	10.73	12233-030	315-0003 Ring Grooves 1/16 1/16 3/16
4.360	656	12.30	11.38	10.97	10.77	12233-040	Valve Reliefs Volume 4cc
4.380	663	12.52	11.46	11.05	10.85	12233-060	



440 & 493 REVERSE DOME

- Forged of 2618 High Strength Alloy
- Pins, Pin Fitting, and Spiral Locks Included
- Valve Reliefs For Most Aftermarket Heads

Compression Ratio computed with .010 deck and .038 head gasket							
Bore	Weight	72.0cc	80.0cc	84.0cc	86.0cc	Part Number	Ring Set
440 - 3.750 Stroke - 6.768 Rod - 2.065 C/H - Dish Top - 1.094 x 2.750 158 Gram Pin							
4.350	687	10.25	9.55	9.24	9.09	12499-030	315-0003 Ring Grooves 1/16 1/16 3/16
4.360	697	10.29	9.59	9.27	9.12	12499-040	Dish Volume 12.0cc
4.380	704	10.37	9.66	9.34	9.19	12499-060	
493 - 4.150 Stroke - 6.768 Rod - 1.865 C/H - Dish Top - 1.094 x 2.750 158 Gram Pin							
4.350	610	9.50	8.95	8.70	8.58	12232-030	315-0003 Ring Grooves 1/16 1/16 3/16
4.360	612	9.53	8.98	8.73	8.61	12232-040	Dish Volume 30.0cc
4.380	614	9.61	9.05	8.80	8.68	12232-060	

FORD



4.6L FLAT TOP

- Forged of 2618 High Strength Alloy
- Pins, Pin Fitting, and Spiral Locks Included

Compression Ratio computed with
.010 deck and .038 head gasket

Bore	Weight	42.4cc	49.8cc	54.2cc	Part Number	Ring Set
4.6 Liter - 3.554 Stroke - 5.933 Rod - 1.215 C/H - .866 x 2.500 89 Gram Pin						
3.552	317	11.92	10.57	9.92	12396-STD	315-0039 Ring Grooves 1.5 1.5 3mm
3.562	319	11.97	0.62	9.97	12396-010	No Valve Relief Volume
3.572	321	12.02	10.67	10.15	12396-020	
3.582	323	12.07	0.71	10.05	12396-030	

5.4L FLAT TOP

- Forged of 2618 High Strength Alloy
- Pins, Pin Fitting, and Spiral Locks Included



Compression Ratio computed with
.010 deck and .038 head gasket

Bore	Weight	42.4cc	49.8cc	54.2cc	Part Number	Ring Set
5.4 Liter - 4.165 Stroke - 6.657 Rod - 1.320 C/H - .866 x 2.500 89 Gram Pin						
3.552	361	13.80	12.22	11.46	13718-STD	315-0039 Ring Grooves 1.5 1.5 3mm
3.572	366	13.92	12.33	11.56	13718-020	No Valve Relief Volume

CUSTOM PISTONS

Don't See What Your Looking For?
Probe Can Manufacture Custom
Pistons For ANY Configuration,
From 4 Pieces to 4,000 Pieces! For
More Information, Call To Speak To Our Technical Staff.



WRIST PIN UPGRADE

For Added Lightweight & Durability
Order Optional Tool Steel Pins
.866 x .120 Wall x 2.500 Part #13995
Now! Upgrade For Minimal Charge!





FORD

4.6L & 5.1L DISH TOP

- Forged of 2618 High Strength Alloy
- Offset Wrist Pins for quieter operation
- Pin Fitting and Double Spiral Locks Included



Ratio computed with 1010 deck and 1038 head gasket							
Bore	Weight	42.4cc	49.8cc	54.2cc	Part Number	Ring Set	
4.6 Liter - 3.554 Stroke - 5.933 Rod - 1.215 C/H - .866 x 2.500 89 Gram Pin							
3.552	342	11.67	10.22	9.53	11884-STD	315-0039	Ring Grooves 1.5 1.5 3mm
3.572	344	11.77	10.31	9.62	11884-020		Dish Volume 4.5cc
3.582	346	11.83	10.36	9.67	11884-030		
4.6 Liter - 3.554 Stroke - 5.933 Rod - 1.215 C/H - .866 x 2.500 89 Gram Pin							
3.552	322	10.49	9.31	8.74	11883-STD	315-0039	Ring Grooves 1.5 1.5 3mm
3.572	324	10.59	9.40	8.82	11883-020		Dish Volume 10.5cc
3.582	326	10.64	9.44	8.86	11883-030		
4.6 Liter - 3.554 Stroke - 5.933 Rod - 1.215 C/H - .866 x 2.500 89 Gram Pin							
3.552	311	9.31	8.36	7.90	10178-STD	315-0039	Ring Grooves 1.5 1.5 3mm
3.572	313	9.40	8.44	7.97	10178-020		Dish Volume 18.1cc
3.582	315	9.44	8.48	8.01	10178-030		
5.1 Liter - 3.750 Stroke - 5.933 Rod - 1.115 C/H - .866 x 2.500 89 Gram Pin							
3.552	TBA	9.18	8.32	7.88	14118-STD	315-0039	Ring Grooves 1.5 1.5 3mm
3.572	TBA	9.26	8.40	7.96	14118-020		Dish Volume 21.1cc
3.582	TBA	9.31	8.44	8.00	14118-030		
5.1 Liter - 3.750 Stroke - 5.950 Rod - 1.098 C/H - .866 x 2.500 89 Gram Pin							
3.552	308	9.18	8.32	7.88	14098-STD	315-0039	Ring Grooves 1.5 1.5 3mm
3.572	315	9.26	8.40	7.96	14098-020		Dish Volume 21.1cc
3.625	335	9.31	8.44	8.00	14098-073	CR8264	
5.1 Liter - 3.750 Stroke - 5.950 Rod - 1.098 C/H - .866 x 2.500 89 Gram Pin							
3.552	316	10.90	9.68	9.09	14110-STD	315-0039	Ring Grooves 1.5 1.5 3mm
3.572	326	11.00	9.77	9.18	14110-020		Dish Volume 11.2cc
3.625	363	11.05	9.82	9.22	14110-073	CR8264	
5.1 Liter - 3.750 Stroke - 6.000 Rod - 1.048 C/H - .927 X 2.500 118 Gram Pin							
3.552	TBA	10.26	9.20	8.67	14433-STD	315-0039	Ring Grooves 1.5 1.5 3mm
3.572	TBA	10.36	9.29	8.75	14433-020		Dish Volume 13.5cc
3.625	TBA	10.61	9.52	8.97	14433-073	CR8264	
3.552	TBA	9.18	8.32	7.88	14434-STD	315-0039	Ring Grooves 1.5 1.5 3mm
3.572	TBA	9.26	8.40	7.96	14434-020		

FORD



2300 - FLAT TOP

- Forged of 2618 High Strength Alloy
- Pins, Pin Fitting, and Spiral Locks Included

**NEW LATE MODEL
CIRCLE TRACK DESIGN!**



Compression Ratio computed with
.010 deck and .038 head gasket

Bore	Weight	54.0cc	58.0cc	62.0cc	Part Number	Ring Set
------	--------	--------	--------	--------	-------------	----------

2300 - 3.130 Stroke - 5.201 Rod - 1.610 C/H - .912 x 2.500 88 Gram Pin

3.811	TBA	9.68	9.19	8.76	14285-030	CR-7255 Ring Grooves 1/16 1/16 3/16
3.821	TBA	9.72	9.23	8.79	14285-040	Valve Relief Volume 2.5cc
3.841	TBA	9.80	9.31	8.87	14285-060	

2300 ULTRALIGHT - FLAT TOP

- Forged of 2618 High Strength Alloy
- Pins, Pin Fitting, and Spiral Locks Included
- Side Gas Ports

**NOW AVAILABLE
IN PRS SERIES!**



Compression Ratio computed with
.010 deck and .038 head gasket

Bore	Weight	54.0cc	58.0cc	62.0cc	Part Number	Ring Set
------	--------	--------	--------	--------	-------------	----------

2300 - 3.130 Stroke - 5.700 Rod - 1.090 C/H - .927 x 2.250 88 Gram Pin

3.811	308	9.76	9.26	8.82	10462-030	CR-2300 Ring Grooves 1.5 1/16 3mm
3.821	310	9.80	9.42	8.85	10462-040	Valve Relief Volume 2.0cc
3.841	314	9.87	9.37	8.92	10462-060	

FOCUS - REVERSE DOME

- Forged of 2618 High Strength Alloy
- Pins, Pin Fitting, and Spiral Locks Included



Compression Ratio computed with
.010 deck and .038 head gasket

Bore	Weight	48.0cc	Part Number	Ring Set
------	--------	--------	-------------	----------

FOCUS - 3.465 Stroke - 5.480 Rod - 1.171 C/H - .787 x 2.250 65 Gram Pin

85mm	TBA	9.00	14482	
------	-----	------	-------	--

Dish Volume -7.2cc

FOCUS - DOME TOP

- Forged of 2618 High Strength Alloy
- Chamfered Pin and Wire Locks Included



Compression Ratio computed with
.010 deck and .038 head gasket

Bore	Weight	48.0cc	Part Number	Ring Set
------	--------	--------	-------------	----------

FOCUS - 3.465 Stroke - 5.480 Rod - 1.171 C/H - .787 x 2.250 65 Gram Pin

85mm	TBA	10.50	14483	
------	-----	-------	-------	--

Dome Volume 3.5cc



FORD

302 & 331 FLAT TOP

- Forged of 2618 High Strength Alloy
- Pin Fitting and Double Spiral Locks Included
- Valve Reliefs For Standard & Twisted Wedge Heads

Bore	Weight	Compression Ratio computed with .010 deck and .038 head gasket				Part Number	Ring Set	
		58.0cc	61.0cc	64.0cc	68.0cc			
302 - 3.000 Stroke - 5.090 Rod - 1.600 C/H - .912 x 2.500 113 Gram Pin								
4.000	508	9.35	9.02	8.72	8.35	10682-STD	315-0036	Ring Grooves 1/16 1/16 3/16
4.030	510	9.46	9.12	8.82	8.44	10682-030		Valve Relief Volume 4cc
4.040	512	9.49	9.16	8.85	8.48	10682-040		
4.060	514	9.56	9.23	8.92	8.54	10682-060		
347 - 3.400 Stroke - 5.315 Rod - 1.175 C/H - .912 x 2.500 113 Gram Pin								
4.125	TBA	11.04	10.61	10.21	9.72	14714-STD	CR1002 5	Ring Grooves 1/16 1/16 3mm Valve Relief Volume -4.5
331 - 3.250 Stroke - 5.400 Rod - 1.175 C/H - .912 x 2.500 113 Gram Pin								
4.000	470	10.05	9.69	9.36	8.96	10666-STD	315-0049	Ring Grooves 1/16 1/16 3mm
4.030	472	10.16	9.81	9.47	9.07	10666-030		Valve Relief Volume 4cc
4.040	474	10.20	9.84	9.51	9.10	10666-040		
331 - 3.250 Stroke - 5.400 Rod - 1.175 C/H - .927 x 2.500 118 Gram Pin								
4.000	470	10.05	9.69	9.36	8.96	12347-STD	315-0049	Ring Grooves 1/16 1/16 3mm
4.030	472	10.16	9.81	9.47	9.07	12347-030		Valve Relief Volume 4cc
4.040	474	10.20	9.84	9.51	9.10	12347-040		

FORD



347 FLAT TOP

- Forged of 2618 High Strength Alloy
- Pin Fitting and Double Spiral Locks Included
- Valve Reliefs For Standard & Twisted Wedge Heads

Compression Ratio computed with
.010 deck and .038 head gasket

Bore	Weight	58.0cc	61.0cc	64.0cc	68.0cc	Part Number	Ring Set
347 - 3.400 Stroke - 5.315 Rod - 1.175 C/H - .912 x 2.500 113 Gram Pin							
4.000	472	10.47	10.10	9.75	9.33	10666-STD	315-0049 Ring Grooves 1/16 1/16 3mm
4.030	474	10.59	10.21	9.87	9.44	10666-030	Valve Relief Volume 4cc
4.040	476	10.63	10.25	9.91	9.58	10666-040	
347 - 3.400 Stroke - 5.315 Rod - 1.175 C/H - .927 x 2.500 117 Gram Pin							
4.000	470	10.47	10.10	9.75	9.33	12347-STD	315-0049 Ring Grooves 1/16 1/16 3mm
4.030	472	10.59	10.21	9.87	9.44	12347-030	Valve Relief Volume 4cc
4.040	474	10.63	10.25	9.91	9.58	12347-040	
363 - 3.400 Stroke - 5.315 Rod - 1.175 C/H - .912 x 2.500 113 Gram Pin							
4.125	TBA	11.04	10.61	10.21	9.72	14714-STD	CR1002 5 Ring Grooves 1/16 1/16 3mm
							Valve Relief Volume 4cc
347 - 3.400 Stroke - 5.400 Rod - 1.090 C/H - .912 x 2.500 113 Gram Pin							
4.000	430	10.47	10.10	9.75	9.33	10660-STD	315-0036 Ring Grooves 1/16 1/16 3/16
4.030	432	10.59	10.21	9.87	9.44	10660-030	Valve Relief Volume 4cc
4.040	434	10.63	10.25	9.91	9.58	10660-040	
347 - 3.400 Stroke - 5.400 Rod - 1.090 C/H - .927 x 2.500 118 Gram Pin							
4.000	422	10.47	10.10	9.75	9.33	12348-STD	315-0036 Ring Grooves 1/16 1/16 3/16
4.030	424	10.59	10.21	9.87	9.44	12348-030	Valve Relief Volume 4cc
4.040	426	10.63	10.25	9.91	9.58	12348-040	
363 - 3.400 Stroke - 5.400 Rod - 1.090 C/H - .927 x 2.500 118 Gram Pin							
4.125	TBA	11.04	10.61	10.21	9.72	14713-STD	315-0032 Ring Grooves 1/16 1/16 3mm
							Valve Relief Volume 4cc



FORD

302 & 331 REVERSE DOME



- Forged of 2618 High Strength Alloy
- Pins, Pin Fitting, and Spiral Locks Included
- Valve Reliefs For Standard & Twisted Wedge Heads

Bore	Weight	Compression Ratio computed with .010 deck and .038 head gasket				Part Number	Ring Set	
		58.0cc	61.0cc	64.0cc	68.0cc			
302 - 3.000 Stroke - 5.090 Rod - 1.600 C/H - .912 x 2.500 113 Gram Pin								
4.000	471	8.13	7.89	7.66	7.38	10684-STD	315-0036	Ring Grooves 1/16 1/16 3/16
4.030	487	8.23	7.98	7.75	7.46	10684-030		Dish Volume 15.0cc
4.040	516	8.26	8.01	7.78	7.49	10684-040		
4.060	534	8.32	8.07	7.84	7.55	10684-060		
331 - 3.250 Stroke - 5.400 Rod - 1.175 C/H - .927 x 2.500 118 Gram Pin								
4.000	390	8.24	8.01	7.79	7.51	12350-STD	315-0049	Ring Grooves 1/16 1/16 3mm
4.030	392	8.34	8.10	7.88	7.61	12350-030		Dish Volume 20.1cc
4.040	394	8.37	8.14	7.91	7.64	12350-040		
331 - 3.250 Stroke - 5.400 Rod - 1.175 C/H - .927 x 2.500 118 Gram Pin								
4.000	449	8.82	8.55	8.30	7.99	12352-STD	315-0049	Ring Grooves 1/16 1/16 3mm
4.030	451	8.93	8.65	8.40	8.08	12352-030		Dish Volume 14.2cc
4.040	453	8.96	8.69	8.43	8.12	12352-040		
331 - 3.250 Stroke - 5.400 Rod - 1.175 C/H - .912 x 2.500 113 Gram Pin								
4.000	384	8.24	8.01	7.79	7.51	11938-STD	315-0049	Ring Grooves 1/16 1/16 3mm
4.030	386	8.34	8.10	7.88	7.61	11938-030		Dish Volume 20.1cc
4.040	388	8.37	8.14	7.91	7.64	11938-040		
331 - 3.250 Stroke - 5.400 Rod - 1.175 C/H - .912 x 2.500 113 Gram Pin								
4.000	499	8.82	8.55	8.30	7.99	10668-STD	315-0049	Ring Grooves 1/16 1/16 3mm
4.030	451	8.93	8.65	8.40	8.08	10668-030		Dish Volume 14.2cc
4.040	453	8.96	8.69	8.43	8.12	10668-040		
347 - 3.400 Stroke - 5.315 Rod - 1.175 C/H - .912 x 2.500 113 Gram Pin								
4.125	TBA	9.28	8.97	8.69	8.33	14715-STD	CR1002 5	Ring Grooves 1/16 1/16 3/16 Valve Relief Volume -18.8cc



347 REVERSE DOME

- Forged of 2618 High Strength Alloy
- Pins, Pin Fitting, and Spiral Locks Included
- Valve Reliefs For Standard & Twisted Wedge Heads

Compression Ratio computed with
.010 deck and .038 head gasket

Bore	Weight	Compression Ratio				Part Number	Ring Set	
		58.0cc	61.0cc	64.0cc	68.0cc			
347 - 3.400 Stroke - 5.315 Rod - 1.175 C/H - .912 x 2.500 113 Gram Pin								
4.000	384	8.59	8.34	8.11	7.82	11938-STD	315-0049	Ring Grooves 1/16 1/16 3mm
4.030	386	8.69	8.44	8.21	7.92	11938-030		Dish Volume 20.1cc
4.040	388	8.73	8.48	8.24	7.95	11938-040		
347 - 3.400 Stroke - 5.315 Rod - 1.175 C/H - .912 x 2.500 113 Gram Pin								
4.000	449	9.19	8.91	8.64	8.32	10668-STD	315-0049	Ring Grooves 1/16 1/16 3mm
4.030	451	9.30	9.01	8.75	8.42	10668-030		Dish Volume 14.2cc
4.040	453	9.34	9.05	8.78	8.45	10668-040		
347 - 3.400 Stroke - 5.315 Rod - 1.175 C/H - .927 x 2.500 118 Gram Pin								
4.000	390	8.59	8.34	8.11	7.82	12350-STD	315-0049	Ring Grooves 1/16 1/16 3mm
4.030	392	8.69	8.44	8.21	7.92	12350-030		Dish Volume 20.1cc
4.040	394	8.73	8.48	8.24	7.95	12350-040		
347 - 3.400 Stroke - 5.315 Rod - 1.175 C/H - .927 x 2.500 118 Gram Pin								
4.000	449	9.19	8.91	8.64	8.32	12352-STD	315-0049	Ring Grooves 1/16 1/16 3mm
4.030	451	9.30	9.01	8.75	8.42	12352-030		Dish Volume 14.2cc
4.040	453	9.34	9.05	8.78	8.45	12352-040		
363 - 3.400 Stroke - 5.315 Rod - 1.175 C/H - .912 x 2.500 113 Gram Pin								
4.125	TBA	9.28	8.97	8.69	8.33	14715-STD	CR1002 5	Ring Grooves 1/16 1/16 3/16
								Valve Relief Volume -18.8cc
347 - 3.400 Stroke - 5.400 Rod - 1.090 C/H - .927 x 2.500 118 Gram Pin								
4.000	390	9.34	9.01	8.70	8.32	12354-STD	315-0036	Ring Grooves 1/16 1/16 3/16
4.030	392	9.45	9.12	8.81	8.43	12354-030		Dish Volume 13.8cc
4.040	394	9.48	9.15	8.84	8.46	12354-040		
347 - 3.400 Stroke - 5.400 Rod - 1.090 C/H - .912 x 2.500 113 Gram Pin								
4.000	393	9.34	9.01	8.70	8.32	10662-STD	315-0036	Ring Grooves 1/16 1/16 3/16
4.030	395	9.45	9.12	8.81	8.43	10662-030		Dish Volume 13.8cc
4.040	397	9.48	9.15	8.84	8.46	10662-040		
363 - 3.400 Stroke - 5.400 Rod - 1.090 C/H - .927 x 2.500 118 Gram Pin								
4.125	TBA	9.28	8.97	8.69	8.33	14712-STD	315-0032	Ring Grooves 1/16 1/16 3/16
								Valve Relief Volume -18.8cc



FORD



302, 331 & 347 UNIVERSAL DOME

- Forged of 2618 High Strength Alloy
 - Pins, Pin Fitting, and Spiral Locks Included
 - Dome Fits Most Aftermarket Cylinder Heads
- Caution: Will Not Work With Twisted Wedge Heads**

		Compression Ratio computed with .010 deck and .038 head gasket							
Bore	Weight	58.0cc	61.0cc	64.0cc	68.0cc	Part Number	Ring Set		
302 - 3.000 Stroke - 5.090 Rod - 1.600 C/H - .912 x 2.500 113 Gram Pin									
4.000	478	11.17	10.70	10.27	9.75	10466-STD	315-0036	Ring Grooves	1/16 1/16 3/16
4.030	480	11.30	10.82	10.38	9.86	10466-030			Dome Volume 8.0cc
4.040	482	11.34	10.86	10.42	9.90	10466-040			
331 - 3.250 Stroke - 5.400 Rod - 1.175 C/H - .912 x 2.500 113 Gram Pin									
4.000	454	12.20	11.68	11.19	10.62	14112-STD	315-0049	Ring Grooves	1/16 1/16 3mm
4.030	456	12.34	11.81	11.32	10.74	14112-030			Dome Volume 9.0cc
4.040	458	12.39	11.85	11.36	10.78	14112-040			
347 - 3.400 Stroke - 5.315 Rod - 1.175 C/H - .912 x 2.500 113 Gram Pin									
4.000	454	12.72	12.16	11.66	11.05	14112-STD	315-0049	Ring Grooves	1/16 1/16 3mm
4.030	456	12.86	12.30	11.79	11.18	14112-030			Dome Volume 9.0cc
4.040	458	12.91	12.35	11.84	11.22	14112-040			
347 - 3.400 Stroke - 5.400 Rod - 1.090 C/H - .927 x 2.500 118 Gram Pin									
4.000	449	12.72	12.16	11.66	11.05	10480-STD	315-0049	Ring Grooves	1/16 1/16 3mm
4.030	451	12.86	12.30	11.79	11.18	10480-030			Dome Volume 9.0cc
4.040	453	12.91	12.35	11.84	11.22	10480-040			

CUSTOM PISTONS

Don't See What Your Looking For?
 Probe Can Manufacture Custom
 Pistons For ANY Configuration,
 From 4 Pieces to 4,000 Pieces! For
 More Information, Call To Speak To Our Technical Staff.



FORD



302, 331 & 347 TWISTED DOME

- Forged of 2618 High Strength Alloy
- Pins, Pin Fitting, and Spiral Locks Included
- Dome Designed For Twisted Wedge Heads

Caution: Will Not Work With Standard Cylinder Heads



Compression Ratio computed with
.010 deck and .038 head gasket

Bore	Weight	58.0cc	61.0cc	64.0cc	68.0cc	Part Number	Ring Set	
302 - 3.000 Stroke - 5.090 Rod - 1.600 C/H - .912 x 2.500 113 Gram Pin								
4.000	490	11.17	10.70	10.27	9.75	10471-STD	315-0036	Ring Grooves 1/16 1/16 3/16
4.030	492	11.30	10.82	10.38	9.86	10471-030		Dome Volume 8.0cc
4.040	494	11.34	10.86	10.42	9.90	10471-040		
331 - 3.250 Stroke - 5.400 Rod - 1.175 C/H - .912 x 2.500 113 Gram Pin								
4.000	452	12.20	11.68	11.19	10.62	14111-STD	315-0049	Ring Grooves 1/16 1/16 3mm
4.030	454	12.34	11.81	11.32	10.74	14111-030		Dome Volume 9.0cc
4.040	458	12.39	11.85	11.36	10.78	14111-040		
347 - 3.400 Stroke - 5.315 Rod - 1.175 C/H - .912 x 2.500 113 Gram Pin								
4.000	452	12.72	12.16	11.66	11.05	14111-STD	315-0049	Ring Grooves 1/16 1/16 3mm
4.030	454	12.86	12.30	11.79	11.18	14111-030		Dome Volume 9.0cc
4.040	458	12.91	12.35	11.87	11.22	14111-040		
347 - 3.400 Stroke - 5.400 Rod - 1.090 C/H - .927 x 2.500 118 Gram Pin								
4.000	448	12.72	12.16	11.66	11.05	10485-STD	315-0049	Ring Grooves 1/16 1/16 3mm
4.030	450	12.86	12.30	11.79	11.18	10485-030		Dome Volume 9.0cc
4.040	452	12.91	12.35	11.84	11.22	10485-040		





FORD



351C & 393C FLAT TOP

- Forged of 2618 High Strength Alloy
- Pins, Pin Fitting, and Spiral Locks Included

Compression Ratio computed with .010 deck and .038 head gasket									
Bore	Weight	58.0cc	64.0cc	68.0cc	76.0cc	Part Number	Ring Set		
351C - 3.500 Stroke - 5.778 Rod - 1.662 C/H - .912 x 2.500 113 Gram Pin									
4.030	437	11.16	10.30	9.80	8.92	14113-030	315-0036	Ring Grooves	1/16 1/16 3/16
4.040	440	11.21	10.34	9.83	8.96	14113-040		Valve Relief Volume	3.0cc
351C - 3.500 Stroke - 6.000 Rod - 1.440 C/H - .927 x 2.500 118 Gram Pin									
4.030	415	11.16	10.30	9.71	8.92	14114-030	315-0036	Ring Grooves	1/16 1/16 3/16
4.040	418	11.21	10.34	9.74	8.96	14114-040		Valve Relief Volume	3.0cc
351C - 3.500 Stroke - 6.200 Rod - 1.250 C/H - .927 x 2.500 118 Gram Pin									
4.020	375	11.12	10.26	9.76	8.89	14616-020	315-0049	Ring Grooves	1/16 1/16 3mm
4.030	378	11.16	10.30	9.80	8.92	14616-030		Valve Relief Volume	3.0cc
4.040	382	11.21	10.34	9.83	8.96	14616-040			
351C - 3.750 Stroke - 6.125 Rod - 1.200 C/H - .927 x 2.500 118 Gram Pin									
4.020	TBA	11.86	11.02	10.53	9.68	14212-020	315-0049	Ring Grooves	1/16 1/16 3mm
4.030	TBA	11.91	11.06	10.57	9.72	14212-030		Valve Relief Volume	3.0cc
4.040	TBA	11.95	11.11	10.61	9.75	14212-040			
351C - 4.00 Stroke - 6.000 Rod - 1.200 C/H - .927 x 2.500 118 Gram Pin									
4.020	TBA	12.57	11.6	11.03	10.05	14212-020	315-0049	Ring Grooves	1/16 1/16 3mm
4.030	TBA	12.62	11.65	11.08	10.09	14212-030		Valve Relief Volume	3.0cc
4.040	TBA	12.67	11.69	11.12	10.13	14212-040			
393C - 3.850 Stroke - 5.956 Rod - 1.300 C/H - .912 x 2.500 113 Gram Pin									
4.030	TBA	12.20	11.33	10.83	9.95	10677-030	315-0049	Ring Grooves	1/16 1/16 3mm
4.040	TBA	12.25	11.38	10.87	9.99	10677-040		Valve Relief Volume	2.0cc
393C - 3.850 Stroke - 6.000 Rod - 1.250 C/H - .927 x 2.500 118 Gram Pin									
4.020	375	11.12	10.26	9.76	8.89	14616-020	315-0049	Ring Grooves	1/16 1/16 3mm
4.030	378	11.16	10.30	9.80	8.92	14616-030	315-0049	Valve Relief Volume	3.0cc
4.040	382	11.21	10.34	9.83	8.96	14616-040	315-0049		

FORD



351C & 393C REVERSE DOME

- Forged of 2618 High Strength Alloy
- Pins, Pin Fitting, and Spiral Locks Included

Bore	Weight	Compression Ratio computed with .010 deck and .038 head gasket				Part Number	Ring Set	
		58.0cc	64.0cc	68.0cc	76.0cc			
351C - 3.500 Stroke - 6.200 Rod - 1.250 C/H - .927 X 2.500 118 Gram Pin								
4.020	TBA	10.00	9.30	8.89	8.16	14617-020	315-0049	Ring Grooves 1/16 1/16 3mm
4.030	TBA	10.04	9.34	8.92	8.19	14614-030	315-0049	Dish Volume 11.0cc
4.040	TBA	10.08	9.38	8.96	8.22	14617-040	315-0049	
351C - 3.750 Stroke - 6.125 Rod - 1.200 C/H - .927 X 2.500 118 Gram Pin								
4.020	435	9.92	9.34	8.99	8.37	14213-020	315-0049	Ring Grooves 1/16 1/16 3mm
4.030	445	9.96	9.37	9.02	8.40	14213-030		Dish Volume 16.0cc
4.040	451	10.00	9.41	9.06	8.44	14213-040		
351C - 3.850 Stroke - 6.00 Rod - 1.250 C/H - .927 X 2.500 118 Gram Pin								
4.020	435	10.92	10.15	9.70	8.90	14617-020	315-0049	Ring Grooves 1/16 1/16 3mm
4.030	445	10.96	10.19	9.74	8.94	14617-030	315-0049	Dish Volume 16.0cc
4.040	451	11.00	10.23	9.78	8.98	14617-040	315-0049	
393C - 3.850 Stroke - 5.956 Rod - 1.300 C/H - .912 x 2.500 118 Gram Pin								
4.030	470	10.20	9.60	9.24	8.61	10669-030	315-0049	Ring Grooves 1/16 1/16 3mm
4.040	472	10.24	9.64	9.28	8.71	10669-040		Dish Volume 16.0cc



FORD



351W, 383W & 393W FLAT TOP

- Forged of 2618 High Strength Alloy
- Pins, Pin Fitting, and Spiral Locks Included
- Valve Reliefs For Standard & Twisted Wedge Heads

computed with .010 deck and .038 head gasket							
Bore	Weight	58.0cc	61.0cc	64.0cc	68.0cc	Part Number	Ring Set
351W - 3.500 Stroke - 5.956 Rod - 1.772 C/H - .912 x 2.500 113 Gram Pin							
4.030	580	10.87	10.49	10.13	9.69	12355-030	315-0036 Ring Grooves 1/16 1/16 3/16
4.040	582	10.92	10.53	10.17	10.73	12355-040	Valve Relief Volume 4.0cc
4.060	584	11.00	10.61	10.25	9.81	12355-060	
351W - 4.000 Stroke - 6.250 Rod - 1.240 C/H - .927 x 2.500 118 Gram Pin							
4.125	TBA	12.83	12.33	11.86	11.29	14717-STD	315-0032 Ring Grooves 1/16 1/16 3/16 Valve Relief Volume -4.5cc
383W - 3.750 Stroke - 6.250 Rod - 1.350 C/H - .927 x 2.500 118 Gram Pin							
4.030	492	11.59	11.17	10.79	10.32	10670-030	315-0036 Ring Grooves 1/16 1/16 3/16
4.040	494	11.63	11.21	10.83	10.36	10670-040	Valve Relief Volume 4.0cc
4.060	496	11.72	11.30	10.91	10.44	10670-060	
393W - 3.850 Stroke - 5.956 Rod - 1.600 C/H - .912 x 2.500 113 Gram Pin							
4.000	508	11.73	11.31	10.92	10.44	10682-STD	315-0036 Ring Grooves 1/16 1/16 3/16
4.030	510	11.87	11.44	11.05	10.57	10682-030	Valve Relief Volume 4.0cc
4.040	512	11.91	11.49	11.09	10.61	10682-040	
4.060	514	12.01	11.58	11.18	10.69	10682-060	
393W - 3.850 Stroke - 6.200 Rod - 1.350 C/H - .927 x 2.500 118 Gram Pin							
4.030	492	11.87	11.44	11.05	10.57	10670-030	315-0036 Ring Grooves 1/16 1/16 3/16
4.040	494	11.91	11.49	11.09	10.61	10670-040	Valve Relief Volume 4.0cc
4.060	496	12.01	11.58	11.18	10.69	10670-060	



351W, 383W & 393W REVERSE DOME

- Forged of 2618 High Strength Alloy
- Pins, Pin Fitting, and Spiral Locks Included
- Valve Reliefs For Standard & Twisted Wedge Heads

Compression Ratio computed with
.010 deck and .038 head gasket

Bore	Weight	58.0cc	61.0cc	64.0cc	68.0cc	Part Number	Ring Set
351W - 3.500 Stroke - 5.956 Rod - 1.772 C/H - .912 x 2.500 113 Gram Pin							
4.030	540	8.74	8.49	8.26	7.98	12358-030	315-0036 Ring Grooves 1/16 1/16 3/16
4.040	542	8.77	8.53	8.30	8.01	12358-040	Dish Volume 22.0cc
4.060	544	8.84	8.60	8.36	8.07	12358-060	
351W - 4.000 Stroke - 6.250 Rod - 1.240 C/H - .927 x 2.500 118 Gram Pin							
4.125	TBA	9.72	9.43	9.16	8.82	14717-STD	315-0032 Ring Grooves 1/16 1/16 3/16 Valve Relief Volume -28.0cc
383W - 3.750 Stroke - 6.250 Rod - 1.350 C/H - .927 x 2.500 118 Gram Pin							
4.030	428	9.59	9.31	9.05	8.72	10676-030	315-0036 Ring Grooves 1/16 1/16 3/16
4.040	430	9.63	9.35	9.08	8.76	10676-040	Dish Volume 19.3cc
4.060	432	9.71	9.42	9.16	8.83	10676-060	
393W - 3.850 Stroke - 5.956 Rod - 1.600 C/H - .912 x 2.500 113 Gram Pin							
4.000	526	8.66	8.44	8.23	7.96	12349-STD	315-0036 Ring Grooves 1/16 1/16 3/16
4.030	528	8.77	8.54	8.33	8.06	12349-030	Dish Volume 30.0cc
4.040	530	8.81	8.58	8.36	8.09	12349-040	
393W - 3.850 Stroke - 5.956 Rod - 1.600 C/H - .912 x 2.500 113 Gram Pin							
4.000	471	10.20	9.88	9.59	9.23	10684-STD	315-0036 Ring Grooves 1/16 1/16 3/16
4.030	487	10.32	10.01	9.71	9.34	10684-030	Dish Volume 15.0cc
4.040	516	10.37	10.05	9.75	9.38	10684-040	
4.060	534	10.45	10.13	9.82	9.45	10684-060	
393W - 3.850 Stroke - 6.200 Rod - 1.350 C/H - .927 x 2.500 118 Gram Pin							
4.030	428	9.83	9.54	9.27	8.93	10676-030	315-0036 Ring Grooves 1/16 1/16 3/16
4.040	430	9.87	9.58	9.31	8.97	10676-040	Dish Volume 19.3cc
4.060	432	9.94	9.65	9.38	9.04	10676-060	



FORD

408W, 418W & 427W FLAT TOP



- Forged of 2618 High Strength Alloy
- Pins, Pin Fitting, and Spiral Locks Included
- Valve Reliefs For Standard & Twisted Wedge Heads

		Compression Ratio computed with .010 deck and .038 head gasket							
Bore	Weight	58.0cc	61.0cc	64.0cc	68.0cc	Part Number	Ring Set		
408W - 4.000 Stroke - 6.125 Rod - 1.350 C/H - .927 x 2.500 118 Gram Pin									
4.030	492	12.29	11.85	11.44	10.94	10670-030	315-0036	Ring Grooves	1/16 1/16 3/16
4.040	494	12.34	11.90	11.49	10.99	10670-040		Valve Relief Volume	4.0cc
4.060	496	12.44	11.99	11.58	11.07	10670-060			
408W - 4.000 Stroke - 6.200 Rod - 1.280 C/H - .927 x 2.500 118 Gram Pin									
4.030	484	12.29	11.85	11.44	10.94	12357-030	315-0036	Ring Grooves	1/16 1/16 3/16
4.040	488	12.34	11.90	11.49	10.99	12357-040		Valve Relief Volume	4.0cc
4.060	496	12.44	11.99	11.58	11.07	12357-060			
408W - 4.000 Stroke - 6.250 Rod - 1.235 C/H - .927 x 2.500 118 Gram Pin									
4.030	475	12.29	11.85	11.44	10.94	10672-030	315-0049	Ring Grooves	1/16 1/16 3mm
4.040	477	12.34	11.90	11.49	10.99	10672-040		Valve Relief Volume	4.0cc
4.060	479	12.44	11.99	11.58	11.07	10672-060			
418W - 4.100 Stroke - 6.200 Rod - 1.235 C/H - .927 x 2.500 118 Gram Pin									
4.030	475	12.58	12.12	11.70	11.31	10672-030	315-0049	Ring Grooves	1/16 1/16 3mm
4.040	477	12.62	12.32	11.75	11.24	10672-040		Valve Relief Volume	4.0cc
4.060	479	12.72	12.27	11.84	11.33	10672-060			
427W - 4.170 Stroke - 6.125 Rod - 1.280 C/H - .927 x 2.500 118 Gram Pin									
4.030	484	12.77	12.31	11.89	11.37	12357-030	315-0036	Ring Grooves	1/16 1/16 3/16
4.040	488	12.82	12.36	11.93	11.41	12357-040		Valve Relief Volume	4.0cc
4.060	496	12.93	12.46	12.03	11.50	12357-060			

CUSTOM PISTONS

Don't See What Your Looking For?
Probe Can Manufacture Custom
Pistons For ANY Configuration,
From 4 Pieces to 4,000 Pieces! For
More Information, Call To Speak To Our Technical Staff.



WRIST PIN UPGRADE

For Added Lightweight & Durability
Order Optional Tool Steel Pins
.927 x .090 Wall x 2.500 Part #11110
.927 x .120 Wall x 2.500 Part #11113
Now! Upgrade For Minimal Charge!



FORD



408W, 418W & 427W REVERSE DOME

- Forged of 2618 High Strength Alloy
- Pins, Pin Fitting, and Spiral Locks Included
- Valve Reliefs For Standard & Twisted Wedge Heads



Compression Ratio computed with
.010 deck and .038 head gasket

Bore	Weight	58.0cc	61.0cc	64.0cc	68.0cc	Part Number	Ring Set	
408W - 4.000 Stroke - 6.125 Rod - 1.350 C/H - .927 x 2.500 118 Gram Pin								
4.030	428	10.18	9.88	9.60	9.25	10676-030	315-0036	Ring Grooves 1/16 1/16 3/16
4.040	430	10.22	9.92	9.64	9.29	10676-040		Dish Volume 19.3cc
4.060	432	10.30	10.00	9.72	9.36	10676-060		
408W - 4.000 Stroke - 6.200 Rod - 1.280 C/H - .927 x 2.500 118 Gram Pin								
4.030	435	10.18	9.88	9.60	9.25	12360-030	315-0036	Ring Grooves 1/16 1/16 3/16
4.040	437	10.22	9.92	9.64	9.29	12360-040		Dish Volume 22.0cc
4.060	439	10.30	10.00	9.72	9.36	12360-060		
408W - 4.000 Stroke - 6.250 Rod - 1.235 C/H - .927 x 2.500 118 Gram Pin								
4.030	418	9.88	9.60	9.33	9.00	10674-030	315-0049	Ring Grooves 1/16 1/16 3mm
4.040	420	9.92	9.64	9.37	9.04	10674-040		Dish Volume 22.0cc
4.060	422	10.00	9.71	9.45	9.12	10674-060		
418W - 4.100 Stroke - 6.200 Rod - 1.235 C/H - .927 x 2.500 118 Gram Pin								
4.030	418	10.11	9.82	9.55	9.21	10674-030	315-0049	Ring Grooves 1/16 1/16 3mm
4.040	420	10.15	9.86	9.59	9.25	10674-040		Dish Volume 22.0cc
4.060	422	10.23	9.94	9.66	9.32	10674-060		
427W - 4.170 Stroke - 6.125 Rod - 1.280 C/H - .927 x 2.500 118 Gram Pin								
4.030	435	10.58	10.26	9.97	9.61	12360-030	315-0036	Ring Grooves 1/16 1/16 3/16
4.040	437	10.62	10.31	10.01	9.65	12360-040		Dish Volume 22.0cc
4.060	439	10.71	10.39	10.09	9.73	12360-060		

CUSTOM PISTONS

Don't See What Your Looking For?
Probe Can Manufacture Custom
Pistons For ANY Configuration,
From 4 Pieces to 4,000 Pieces! For
More Information, Call To Speak To Our Technical Staff.



WRIST PIN UPGRADE

For Added Lightweight & Durability
Order Optional Tool Steel Pins
.927 x .090 Wall x 2.500 Part #11110
.927 x .120 Wall x 2.500 Part #11113
Now! Upgrade For Minimal Charge!





FORD

460, 532 & 557 FLAT TOP



- Forged of 2618 High Strength Alloy
 - Pins, Pin Fitting, and Spiral Locks Included
 - Valve Relief For Most Aftermarket Heads
- Will not fit SJC or Kaase cylinder heads*

Compression Ratio computed with .010 deck and .038 head gasket							
Bore	Weight	74.0cc	86.0cc	100.0cc	Part Number	Ring Set	
460 - 3.850 Stroke - 6.605 Rod - 1.770 C/H - 1.040 x 2.930 157 Gram Pin							
4.390	650	11.50	10.28	9.16	10661-030	315-0025	Ring Grooves 1/16 1/16 3/16
4.420	663	11.63	10.39	9.26	10661-060		Valve Relief Volume 3.0cc
532 - 4.300 Stroke - 6.605 Rod - 1.535 C/H - 1.040 x 2.930 157 Gram Pin							
4.390	TBA	12.61	11.26	10.04	14115-030	315-0025	Ring Grooves 1/16 1/16 3/16
4.440	TBA	12.84	11.47	10.23	14115-080	315-0057	Valve Relief Volume 3.0cc
532 - 4.300 Stroke - 6.800 Rod - 1.350 C/H - .990 x 2.930 151 Gram Pin							
4.390	552	12.61	11.26	10.20	10663-030	315-0025	Ring Grooves 1/16 1/16 3/16
4.440	577	12.84	11.47	10.23	10663-080	315-0057	Valve Relief Volume 3.0cc
532 - 4.300 Stroke - 6.700 Rod - 1.450 C/H - .990 x 2.930 151 Gram Pin							
4.390	570	12.61	11.26	10.20	13600-030	315-0025	Ring Grooves 1/16 1/16 3/16
4.440	590	12.84	11.47	10.23	13600-080	315-0057	Valve Relief Volume 3.0cc
557 - 4.500 Stroke - 6.700 Rod - 1.350 C/H - .990 x 2.930 151 Gram Pin							
4.390	552	13.15	11.74	10.46	10663-030	315-0025	Ring Grooves 1/16 1/16 3/16
4.440	577	13.39	11.96	10.66	10663-080	315-0057	Valve Relief Volume 3.0cc
557 - 4.500 Stroke - 6.800 Rod - 1.250 C/H - .990 x 2.930 151 Gram Pin							
4.390	542	13.15	11.74	10.46	10671-030	315-0025	Ring Grooves 1/16 1/16 3/16
4.440	563	13.39	11.96	10.66	10671-080	315-0057	Valve Relief Volume 3.0cc

CUSTOM PISTONS

Don't See What Your Looking For?
 Probe Can Manufacture Custom
 Pistons For ANY Configuration,
 From 4 Pieces to 4,000 Pieces! For
 More Information, Call To Speak To Our Technical Staff.



WRIST PIN UPGRADE

For Added Lightweight & Durability
 Order Optional Tool Steel Pins
 .990 x .120 Wall x 2.930 Part #11117
 .990 x .150 Wall x 2.930 Part #14225

Now! Upgrade For Minimal Charge!



FORD



460, 532 & 557 REVERSE DOME

- Forged of 2618 High Strength Alloy
 - Pins, Pin Fitting, and Spiral Locks Included
 - Valve Relief For Most Aftermarket Heads
- Will not fit SJC or Kaase cylinder heads



Bore	Weight	Compression Ratio computed with .010 deck and .038 head gasket			Part Number	Ring Set	
		74.0cc	86.0cc	100.0cc			
460 - 3.850 Stroke - 6.605 Rod - 1.770 C/H - 1.040 x 2.930 157 Gram Pin							
4.390	628	10.47	9.46	8.51	12331-030	315-0025	Ring Grooves 1/16 1/16 3/16
4.420	632	10.59	9.63	8.67	12331-060	315-0057	Dish Volume 11.0cc
532 - 4.300 Stroke - 6.605 Rod - 1.532 C/H - 1.040 x 2.930 151 Gram Pin							
4.390	TBA	12.60	11.30	10.00	14334-030	315-0025	Ring Grooves 1/16 1/16 3/16
4.440	TBA	12.90	11.50	10.20	14334-080	315-0057	Dish Volume 24.0cc
532 - 4.300 Stroke - 6.700 Rod - 1.450 C/H - .990 x 2.930 151 Gram Pin							
4.390	555	10.08	9.22	8.40	13599-030	315-0025	Ring Grooves 1/16 1/16 3/16
4.440	571	10.27	9.39	8.56	13599-080	315-0057	Dish Volume 26.0cc
532 - 4.300 Stroke - 6.800 Rod - 1.350 C/H - .990 x 2.930 151 Gram Pin							
4.390	536	10.44	9.52	8.64	12330-030	315-0025	Ring Grooves 1/16 1/16 3/16
4.440	557	10.64	9.70	8.81	12330-080	315-0057	Dish Volume 22.0cc
557 - 4.500 Stroke - 6.700 Rod - 1.350 C/H - .990 x 2.930 151 Gram Pin							
4.390	536	11.07	9.97	8.93	12330-030	315-0025	Ring Grooves 1/16 1/16 3/16
4.440	557	11.28	10.16	9.11	12330-080	315-0057	Dish Volume 22.0cc
557 - 4.500 Stroke - 6.800 Rod - 1.250 C/H - .990 x 2.930 151 Gram Pin							
4.390	506	10.78	9.80	8.87	12397-030	315-0025	Ring Grooves 1/16 1/16 3/16
4.440	526	10.98	9.98	9.04	12397-080	315-0057	Dish Volume 18.5cc

CUSTOM PISTONS

Don't See What Your Looking For?
Probe Can Manufacture Custom
Pistons For ANY Configuration,
From 4 Pieces to 4,000 Pieces! For
More Information, Call To Speak To Our Technical Staff.



WRIST PIN UPGRADE

For Added Lightweight & Durability
Order Optional Tool Steel Pins
.990 x .120 Wall x 2.930 Part #11117
.990 x .150 Wall x 2.930 Part #14225

Now! Upgrade For Minimal Charge!





FORD



390 & 428FE FLAT TOP

- Forged of 2618 High Strength Alloy
- Pins, Pin Fitting, and Spiral Locks Included

		Compression Ratio computed with .010 deck and .038 head gasket						
Bore	Weight	68.0cc	72.0cc	76.0cc	Part Number	Ring Set		
390FE - 3.980 Stroke - 6.490 Rod - 1.665 C/H - .975 x 2.750 136 Gram Pin								
4.080	530	10.50	10.00	10.30	14472-030	315-0043	Ring Grooves 1/16 1/16 3/16	
							Valve Relief Volume 4.0cc	
428FE - 3.980 Stroke - 6.490 Rod - 1.665 C/H - .975 x 2.750 136 Gram Pin								
4.130	555	11.50	11.00	10.50	14471-STD	315-0032	Ring Grooves 1/16 1/16 3/16	
4.160	565	11.60	11.00	10.60	14471-030		Valve Relief Volume 4.0cc	



390 & 428FE REVERSE DOME

- Forged of 2618 High Strength Alloy
- Pins, Pin Fitting, and Spiral Locks Included

		Compression Ratio computed with .010 deck and .038 head gasket						
Bore	Weight	68.0cc	72.0cc	76.0cc	Part Number	Ring Set		
390FE - 3.980 Stroke - 6.490 Rod - 1.665 C/H - .975 x 2.750 136 Gram Pin								
4.080	520	9.60	9.30	9.10	14470-030	315-0043	Ring Grooves 1/16 1/16 3/16	
							Dish Volume 16.9cc	
428FE - 3.980 Stroke - 6.490 Rod - 1.665 C/H - .975 x 2.750 136 Gram Pin								
4.130	555	9.90	9.60	9.20	14271-STD	315-0032	Ring Grooves 1/16 1/16 3/16	
4.160	565	10.10	9.70	9.30	14271-030		Dish Volume 16.9cc	



350 FLAT TOP

- Forged of 2618 High Strength Alloy
- Pins, Pin Fitting, and Spiral Locks Included



Compression Ratio computed with
.010 deck and .038 head gasket

Bore	Weight	64.0cc	72.0cc	Part Number	Ring Set
350 - 3.385 Stroke - 6.000 Rod - 1.625 C/H - .980 x 2.750 142 Gram Pin					
4.087	TBA	10.10	9.20	14475-030	CR3690-95 Ring Grooves 1/16 1/16 3/16
Valve Relief Volume 4cc					

455 FLAT TOP

- Forged of 2618 High Strength Alloy
- Pins, Pin Fitting, and Spiral Locks Included



Compression Ratio computed with
.010 deck and .038 head gasket

Bore	Weight	77.0cc	87.0cc	Part Number	Ring Set
455 - 4.250 Stroke - 6.735 Rod - 1.625 C/H - .980 x 2.750 142 Gram Pin					
4.155	TBA	11.10	10.10	14476-030	315-0032 Ring Grooves 1/16 1/16 3/16
4.185	TBA	11.10	10.10	14476-060	Valve Relief Volume 4cc

CUSTOM PISTONS

Don't See What Your Looking For?
Probe Can Manufacture Custom
Pistons For ANY Configuration,
From 4 Pieces to 4,000 Pieces! For
More Information, Call To Speak To Our Technical Staff.





PONTIAC

400, 428 & 455 FLAT TOP

- Forged of 2618 High Strength Alloy
- Pins, Pin Fitting, and Spiral Locks Included

		Compression Ratio computed with .010 deck and .038 head gasket					
Bore	Weight	72.0cc	87.0cc	Part Number	Ring Set		
400 - 3.750 Stroke - 6.625 Rod - 1.708 C/H - .980 x 2.750 142 Gram Pin							
4.150	525	10.47	8.94	14473-030	315-0032	Ring Grooves 1/16 1/16 3/16 Valve Relief Volume 4.0cc	
428 - 4.000 Stroke - 6.625 Rod - 1.590 C/H - .980 x 2.750 142 Gram Pin							
4.125	505	11.00	9.39	14474-005	315-0032	Ring Grooves 1/16 1/16 3/16 Valve Relief Volume 4.0cc	
4.150	510	11.11	9.48	14474-030	315-0032	Valve Relief Volume 4.0cc	
455 - 4.210 Stroke - 6.625 Rod - 1.485 C/H - .980 x 2.750 142 Gram Pin							
4.171	510	11.74	10.02	14722-030	315-0032	Ring Grooves 1/16 1/16 3/16 Valve Relief Volume 4.0cc	
4.181	515	11.78	10.06	14722-040	315-0032	Valve Relief Volume 4.0cc	

CUSTOM PISTONS

Don't See What Your Looking For?
Probe Can Manufacture Custom
Pistons For ANY Configuration,
From 4 Pieces to 4,000 Pieces! For
More Information, Call To Speak To Our Technical Staff.



ACURA & HONDA



1.7L, 1.8L & 2.0L - FLAT TOP

- Forged of 2618 High Strength Alloy
- .827 x 2.25 65 gram Wrist Pins Included
- Pins, Pin Fitting, and Spiral Locks Included
- Offset Pinholes For Reduced Rod Angle to Eliminate Piston Noise



Compression Ratio computed with
.005 deck and .027 head gasket

Bore	Weight	41.5cc	42.7cc	45.0cc	Part Number	Ring Set	
Civic Si-R (90-00) - Del Sol VTEC (94-97) - Civic Si (99-00) B16A1/2/3							
3.047 Stroke - 5.290 Rod - 1.181 C/H - Stock Head CC 42.7							
81.0mm (3.189)	268	9.09	8.90	8.55	11375-STD	8100MS	Ring Grooves 1.0 x 1.2 x 2.8
81.5mm (3.209)	274	9.18	8.99	8.64	11375-.50	8150MS	Valve Relief Volume 2.0cc
Integra GSR (92-93) B17A1 DOHC VTEC							
3.205 Stroke - 5.208 Rod - 1.181 C/H - Stock Head CC 42.7							
81.0mm (3.189)	268	9.51	9.31	8.95	11375-STD	8100MS	Ring Grooves 1.0 x 1.2 x 2.8
81.5mm (3.209)	274	9.61	9.41	9.04	11375-.50	8150MS	Valve Relief Volume 2.0cc
Integra GSR (94-01) B18C1 DOHC VTEC							
3.433 Stroke - 5.429 Rod - 1.181 C/H - Stock Head CC 41.5							
81.0mm (3.189)	268	10.12	9.90	9.51	11375-STD	8100MS	Ring Grooves 1.0 x 1.2 x 2.8
81.5mm (3.209)	274	10.23	10.01	9.61	11375-.50	8150MS	Valve Relief Volume 2.0cc
Integra (90-00) B18A1/B1 DOHC Non-VTEC							
3.504 Stroke - 5.394 Rod - 1.181 C/H - Stock Head CC 45.0							
81.0mm (3.189)	268	10.32	10.09	9.69	11375-STD	8100MS	Ring Grooves 1.0 x 1.2 x 2.8
81.5mm (3.209)	274	10.42	10.19	9.79	11375-.50	8150MS	Valve Relief Volume 2.0cc
Integra Type-R (97-01) B18C5 DOHC VTEC							
3.433 Stroke - 5.429 Rod - 1.181 C/H - Stock Head CC 42.7							
81.0mm (3.189)	268	10.12	9.90	9.51	11375-STD	8100MS	Ring Grooves 1.0 x 1.2 x 2.8
81.5mm (3.209)	274	10.23	10.01	9.61	11375-.50	8150MS	Valve Relief Volume 2.0cc
Integra LS/RS B18A1/B1 with LS VTEC B16A Head							
3.504 Stroke - 5.394 Rod - 1.181 C/H - Stock Head CC 42.7							
81.0mm (3.189)	268	10.32	10.09	9.69	11375-STD	8100MS	Ring Grooves 1.0 x 1.2 x 2.8
81.5mm (3.209)	274	10.42	10.19	9.79	11375-.50	8150MS	Valve Relief Volume 2.0cc
Honda CRV (97-00) B20B/Z with B16A1/A2/A3 Head							
3.504 Stroke - 5.394 Rod - 1.181 C/H - Stock Head CC 42.7							
84.0mm (3.307)	TBA	10.95	10.71	10.29	11375-3.0	SWH30437-0	Ring Grooves 1.2 x 1.2 x 2.8
84.5mm (3.327)	TBA	11.06	10.82	10.39	11375-3.5	SWH30437-2	Valve Relief Volume 2.0cc
85.0mm (3.347)	TBA	11.17	10.93	10.50	11375-4.0	SWH30437-4	



ACURA & HONDA

1.6L, 1.7L, 1.8L & 2.0L REVERSE DOME

- Forged of 2618 High Strength Alloy
- .827 x 2.25 65 gram Wrist Pins Included

- Pins, Pin Fitting, and Spiral Locks Included
- Offset Pinholes For Reduced Rod Angle to Eliminate Piston Noise

Compression Ratio computed with
.005 deck and .027 head gasket

Bore	Weight	41.5cc	42.7cc	45.0cc	Part Number	Ring Set	
Civic Si-R (90-00) - Del Sol VTEC (94-97) - Civic Si (99-00) B16A1/2/3							
3.047 Stroke - 5.290 Rod - 1.181 C/H - Stock Head CC 42.7							
81.0mm (3.189)	268	8.14	7.99	7.71	11885-STD	8100MS	Ring Grooves 1.0 x 1.2 x 2.8
81.5mm (3.209)	274	8.23	8.07	7.79	11885-.50	8150MS	Dish Volume 7.7cc
Integra GSR (92-93) B17A1 DOHC VTEC							
3.205 Stroke - 5.208 Rod - 1.181 C/H - Stock Head CC 42.7							
81.0mm (3.189)	268	8.52	8.36	8.36	11885-STD	8100MS	Ring Grooves 1.0 x 1.2 x 2.8
81.5mm (3.209)	274	8.61	8.45	8.45	11885-.50	8150MS	Dish Volume 7.7cc
Integra GSR (94-01) B18C1 DOHC VTEC							
3.433 Stroke - 5.429 Rod - 1.181 C/H - Stock Head CC 41.5							
81.0mm (3.189)	268	9.07	8.89	8.58	11885-STD	8100MS	Ring Grooves 1.0 x 1.2 x 2.8
81.5mm (3.209)	274	8.61	8.45	8.45	11885-.50	8150MS	Dish Volume 7.7cc
Integra (90-00) B18A1/B1 DOHC Non-VTEC							
3.504 Stroke - 5.394 Rod - 1.181 C/H - Stock Head CC 45.0							
81.0mm (3.189)	268	9.24	8.06	8.74	11885-STD	8100MS	Ring Grooves 1.0 x 1.2 x 2.8
81.5mm (3.209)	274	9.33	9.16	8.83	11885-.50	8150MS	Dish Volume 7.7cc
Integra Type-R (97-01) B18C5 DOHC VTEC							
3.433 Stroke - 5.429 Rod - 1.181 C/H - Stock Head CC 42.7							
81.0mm (3.189)	268	9.07	8.89	8.58	11885-STD	8100MS	Ring Grooves 1.0 x 1.2 x 2.8
81.5mm (3.209)	274	9.16	8.99	8.67	11885-.50	8150MS	Dish Volume 7.7cc
Integra LS/RS B18A1/B1 with LS VTEC B16A Head							
3.504 Stroke - 5.394 Rod - 1.181 C/H - Stock Head CC 42.7							
81.0mm (3.189)	268	9.24	8.06	8.74	11885-STD	8100MS	Ring Grooves 1.0 x 1.2 x 2.8
81.5mm (3.209)	274	9.33	9.16	8.83	11885-.50	8150MS	Dish Volume 7.7cc
Honda CRV (97-00) B20B/Z with B16A1/A2/A3 Head							
3.504 Stroke - 5.394 Rod - 1.181 C/H - Stock Head CC 42.7							
84.0mm (3.307)	TBA	9.82	9.63	9.29	11885-3.0	SWH30437-0	Ring Grooves 1.2 x 1.2 x 2.8
84.0mm (3.307)	TBA	9.26	9.07	8.73	14444-3.0	SWH30437-0	Dish Volume 11.9cc
84.5mm (3.327)	TBA	9.92	9.73	9.38	11885-3.5	SWH30437-2	Dish Volume 7.7cc
84.5mm (3.327)	TBA	9.35	9.17	8.82	14444-3.5	SWH30437-2	Dish Volume 11.9cc
85.0mm (3.347)	TBA	10.01	9.82	9.48	11885-4.0	SWH30437-4	
Honda RSX (We recommend sleeving the block for best results)							
3.386 Stroke - 5.472 Rod - 1.181 C/H - Stock Head CC 50.5							
86mm (3.386)	TBA	8.90			14478-STD		Ring Grooves 1.2 x 1.2 x 2.8
87mm (3.425)	TBA	9.00			14478-1.0		Dish Volume 7.7cc

ACURA & HONDA



1.6L, 1.7L, 1.8L & 2.0L - LOW DOME

- Forged of 2618 High Strength Alloy
- .827 x 2.250 65 Gram Wrist Pins included
- Pins, Pin Fitting, and Spiral Locks Included
- Offset Pinholes For Reduced Rod Angle to Eliminate Piston Noise

Compression Ratio computed with
.005 deck and .027 head gasket

Bore	Weight	41.5cc	42.7cc	45.0cc	Part Number	Ring Set	
Civic Si-R (90-00) - Del Sol VTEC (94-97) - Civic Si (99-00) B16A1/2/3							
3.047 Stroke - 5.290 Rod - 1.181 C/H - Stock Head CC 42.7							
81.0mm (3.189)	268	10.46	9.99	9.55	11376-STD	8100MS	Ring Grooves 1.0 x 1.2 x 2.8
81.5mm (3.209)	274	10.56	10.09	9.65	11376-.50	8150MS	Dome Volume 3.5cc
Integra GSR (92-93) B17A1 DOHC VTEC							
3.205 Stroke - 5.208 Rod - 1.181 C/H - Stock Head CC 42.7							
81.0mm (3.189)	268	10.66	10.45	9.99	11376-STD	8100MS	Ring Grooves 1.0 x 1.2 x 2.8
81.5mm (3.209)	274	10.82	10.56	10.08	11376-.50	8150MS	Dome Volume 3.5cc
Integra GSR (94-01) B18C1 DOHC VTEC							
3.433 Stroke - 5.429 Rod - 1.181 C/H - Stock Head CC 41.5							
81.0mm (3.189)	268	11.40	11.12	10.63	11376-STD	8100MS	Ring Grooves 1.0 x 1.2 x 2.8
81.5mm (3.209)	274	11.52	11.24	10.74	11376-.50	8150MS	Dome Volume 3.5cc
Integra (90-00) B18A1/B1 DOHC Non-VTEC							
3.504 Stroke - 5.394 Rod - 1.181 C/H - Stock Head CC 45.0							
81.0mm (3.189)	268	11.61	11.33	10.82	11376-STD	8100MS	Ring Grooves 1.0 x 1.2 x 2.8
81.5mm (3.209)	274	11.73	11.45	10.94	11376-.50	8150MS	Dome Volume 3.5cc
Integra Type-R (97-01) B18C5 DOHC VTEC							
3.433 Stroke - 5.429 Rod - 1.181 C/H - Stock Head CC 42.7							
81.0mm (3.189)	268	11.40	11.12	10.63	11376-STD	8100MS	Ring Grooves 1.0 x 1.2 x 2.8
81.5mm (3.209)	274	11.52	11.24	10.74	11376-.50	8150MS	Dome Volume 3.5cc
Integra LS/RS B18A1/B1 with LS VTEC B16A Head							
3.504 Stroke - 5.394 Rod - 1.181 C/H - Stock Head CC 42.7							
81.0mm (3.189)	268	11.61	11.33	10.82	11376-STD	8100MS	Ring Grooves 1.0 x 1.2 x 2.8
81.5mm (3.209)	274	11.73	11.45	10.94	11376-.50	8150MS	Dome Volume 3.5cc
Honda CRV (97-00) B20B/Z with B16A1/A2/A3 Head							
3.504 Stroke - 5.394 Rod - 1.181 C/H - Stock Head CC 42.7							
84.0mm (3.307)	TBA	12.32	12.02	11.49	11376-3.0	SWH30437-0	Ring Grooves 1.2 x 1.2 x 2.8
84.5mm (3.327)	TBA	12.44	12.14	11.60	11376-3.5	SWH30437-2	Dome Volume 3.5cc
85.0mm (3.347)	TBA	12.57	12.26	11.71	11376-4.0	SWH30437-4	
86mm (3.386)	TBA	13.08	12.73	12.10	11376-.50		



ACURA & HONDA



1.6L, 1.7L, 1.8L & 2.0L - HIGH DOME

- Forged of 2618 High Strength Alloy
- .827 x 2.250 65 Gram Wrist Pins included
- Pins, Pin Fitting, and Spiral Locks Included
- Offset Pinholes For Reduced Rod Angle to Eliminate Piston Noise

Compression Ratio computed with
.005 deck and .027 head gasket

Bore	Weight	41.5cc	42.7cc	45.0cc	Part Number	Ring Set	
Civic Si-R (90-00) - Del Sol VTEC (94-97) - Civic Si (99-00) B16A1/2/3							
3.047 Stroke - 5.290 Rod - 1.181 C/H - Stock Head CC 42.7							
81.0mm (3.189)	268	11.16	10.87	10.34	11377-STD	8100MS	Ring Grooves 1.0 x 1.2 x 2.8
81.5mm (3.209)	274	11.28	10.98	10.45	11377-.50	8150MS	Dome Volume 7.1cc
Integra GSR (92-93) B17A1 DOHC VTEC							
3.205 Stroke - 5.208 Rod - 1.181 C/H - Stock Head CC 42.7							
81.0mm (3.189)	268	11.16	10.87	10.34	11377-STD	8100MS	Ring Grooves 1.0 x 1.2 x 2.8
81.5mm (3.209)	274	11.28	10.98	10.45	11377-.50	8150MS	Dome Volume 7.1cc
Integra GSR (94-01) B18C1 DOHC VTEC							
3.433 Stroke - 5.429 Rod - 1.181 C/H - Stock Head CC 41.5							
81.0mm (3.189)	268	11.68	11.37	10.82	11377-STD	8100MS	Ring Grooves 1.0 x 1.2 x 2.8
81.5mm (3.209)	274	11.80	11.48	10.93	11377-.50	8150MS	Dome Volume 7.1cc
Integra (90-00) B18A1/B1 DOHC Non-VTEC							
3.504 Stroke - 5.394 Rod - 1.181 C/H - Stock Head CC 45.0							
81.0mm (3.189)	268	12.43	12.10	11.5	111377-STD	8100MS	Ring Grooves 1.0 x 1.2 x 2.8
81.5mm (3.209)	274	12.55	12.22	11.62	11377-.50	8150MS	Dome Volume 7.1cc
Integra Type-R (97-01) B18C5 DOHC VTEC							
3.433 Stroke - 5.429 Rod - 1.181 C/H - Stock Head CC 42.7							
81.0mm (3.189)	268	12.66	12.32	11.72	11377-STD	8100MS	Ring Grooves 1.0 x 1.2 x 2.8
81.5mm (3.209)	274	12.79	12.45	11.84	11377-.50	8150MS	Dome Volume 7.1cc
Integra LS/RS B18A1/B1 with LS VTEC B16A Head							
3.504 Stroke - 5.394 Rod - 1.181 C/H - Stock Head CC 42.7							
81.0mm (3.189)	268	12.43	12.10	11.5	111377-STD	8100MS	Ring Grooves 1.0 x 1.2 x 2.8
81.5mm (3.209)	274	12.55	12.22	11.62	11377-.50	8150MS	Dome Volume 7.1cc
Honda CRV (97-00) B20B/Z with B16A1/A2/A3 Head							
3.504 Stroke - 5.394 Rod - 1.181 C/H - Stock Head CC 42.7							
84.0mm (3.307)	TBA	13.42	13.07	12.43	11377-3.0	SWH30437-0	Ring Grooves 1.2 x 1.2 x 2.8
84.5mm (3.327)	TBA	13.56	13.19	12.55	11377-3.5	SWH30437-2	Dome Volume 7.1cc
85.0mm (3.347)	TBA	13.69	13.31	12.67	11377-4.0	SWH30437-4	
86mm (3.386)	TBA	13.83	13.42	12.670	11377-5.0		
Honda RSX (We recommend sleeving the block for best results)							
3.386 Stroke - 5.472 Rod - 1.181 C/H - Stock Head CC 50.5							
86mm (3.386)	TBA	11.50			14479-STD		Ring Grooves 1.2 x 1.2 x 2.8
87mm (3.425)	TBA	11.70			14479-1.0		Dome Volume 7.1cc

MITSUBISHI



88-92 & 93-99 REVERSE DOME

- Forged of 2618 High Strength Alloy - Chamfered Pin and Wire Locks Included

Compression Ratio computed with
.010 deck and .038 head gasket

Bore	Weight	47.0cc	Part Number	Ring Set	
88-92 - 3.465 Stroke - 5.906 Rod - 1.375 C/H - .827 x 2.250 65 Gram Pin					
85.5mm	288	8.33	14480-.50	SWM31071-2	Ring Grooves 1.2 x 1.5 x 3.0mm
86mm	290	8.40	14480-1.0	SWM31071-4	Dish Volume -13.5cc
93-99 - 3.465 Stroke - 5.906 Rod - 1.375 C/H - .866 x 2.250 65 Gram Pin					
85.5mm	285	8.33	14481-.50	SWM31071-2	Ring Grooves 1.2 x 1.5 x 3.0mm
86mm	287	8.40	14481-1.0	SWM31071-4	Dish Volume -13.5cc
88-92 - 3.937 Stroke - 5.906 Rod - 1.130 C/H - .827 x 2.250 65 Gram Pin					
85.5mm	298	8.30	14711-.50	SWM31071-2	W/4G64 Crankshaft Ring Grooves 1.2 x 1.5 x 3.0mm
					Dish Volume -22.0cc
93-99 - 3.937 Stroke - 5.906 Rod - 1.130 C/H - .866 x 2.250 65 Gram Pin					
85.5mm	294	8.30	14707-.50	SWM31071-2	W/4G64 Crankshaft Ring Grooves 1.2 x 1.5 x 3.0mm
					Dish Volume -22.0cc

SUBARU

WRX 2.0L - REVERSE DOME

- Forged of 2618 High Strength Alloy - Chamfered Pin and Wire Locks Included



Compression Ratio computed with
.005 deck and .032 head gasket

Bore	Weight	48.0cc	Part Number	Ring Set	
WRX 2.0L - 2.953 Stroke - 5.135 Rod - 1.287 C/H - .9055 x 2.250 69 Gram Pin					
92.0mm	TBA	8.33	14491-STD	SWF20061-0	
92.5mm	TBA	8.40	14491-.50		Dish Volume -12.6cc

EJ25D 2.5L(99-UP) - REVERSE DOME

- Forged of 2618 High Strength Alloy - Chamfered Pin and Wire Locks Included

Compression Ratio computed with
.012 deck and .032 head gasket

Bore	Weight	50.0cc	Part Number	Ring Set	
EJ25D-2.5L 99-UP - 3.110 Stroke - 5.167 Rod - 1.160 C/H - .9055 x 2.250 69 Gram Pin					
99.5mm	TBA	8.15	14492-030		
100mm	TBA	8.22	14492-060		Dish Volume -23.3cc



NISSAN

VG30DETT 3.0L REVERSE DOME

Compression Ratio computed with
-.010 deck and .045 head gasket

Bore	Weight	49.5cc	Part Number	Ring Set
VG30DETT 3.0L - 3.270 Stroke - 6.071 Rod - 1.255 C/H - .866 x 2.250				
3.445	TBA	9.34	14484-.50	SWM31120-2 Ring Grooves 1.2 x 1.2 x 3.0mm
3.465	TBA	9.43	14484-1.0	Dish Volume -4.1cc

VG30DETT 3.0L - DOME TOP

- Forged of 2618 High Strength Alloy

Compression Ratio computed with
.002 deck and .036 head gasket

Bore	Weight	49.5cc	Part Number	Ring Set
VG30DETT 3.0L - 3.270 Stroke - 6.071 Rod - 1.255 C/H - .866 x 2.250				
3.445	TBA	10.90	14485-.50	SWM31120-0 Ring Grooves 1.2 x 1.2 x 3.0mm
3.465	TBA	11.00	14485-1.0	SWM31120-2 Dome Volume 4.8cc

SENTRA SR20DET - FLAT TOP

- Forged of 2618 High Strength Alloy

Compression Ratio computed with
.010 deck and .038 head gasket

Bore	Weight	45.0cc	Part Number	Ring Set
SENTRA SR20DET - 3.386 Stroke - 5.366 Rod - 1.260 C/H - .866 x 2.250				
3.405	TBA	10.58	14487-.50	SWT10162-2 Ring Grooves 1.2 x 1.2 x 3.0mm
3.425	TBA	10.68	14487-1.0	SWT10162-4 Valve Relief Volume 0cc
JDM BLACK TOP - 3.386 Stroke - 5.366 Rod - 1.260 C/H - .866 x 2.250				
3.405	TBA	10.58	14487-.50	SWT10162-2 Ring Grooves 1.2 x 1.2 x 3.0mm
3.425	TBA	10.68	14487-1.0	SWT10162-4 Valve Relief Volume 0cc

SENTRA SR20DET - REVERSE DOME

- Forged of 2618 High Strength Alloy

Compression Ratio computed with
.002 deck and .03 head gasket

Bore	Weight	46.5cc	Part Number	Ring Set
VG30DETT 3.0L - 3.386 Stroke - 5.366 Rod - 1.260 C/H - .866 x 2.250				
3.405	TBA	9.63	14486-.50	
3.425	TBA	8.72	14486-1.0	Dish Volume -12.0cc

TOYOTA

3SGTE 2.0L REVERSE DOME

- Forged of 2618 High Strength Alloy



Compression Ratio computed with
.000 deck and .056 head gasket

Bore	Weight	53.0cc	Part Number	Ring Set
3SGTE 2.0L - 3.386 Stroke - 5.433 Rod - 1.375 C/H - .866 x 2.250 65 Gram Pin				
3.405	TBA	8.58	14488-.50	SWM31120-0 Ring Grooves 1.2 x 1.2 x 3.0mm
3.425	TBA	8.66	14488-1.0	SWM31120-2 Dish Volume -4.1cc

2JZGTE 3.0L - REVERSE DOME

- Forged of 2618 High Strength Alloy

Compression Ratio computed with
.010 deck and .038 head gasket

Bore	Weight	45.0cc	Part Number	Ring Set
2JZGTE 3.0L - 3.386 Stroke - 5.590 Rod - 1.338 C/H - .866 x 2.250 65 Gram Pin				
3.405	TBA	10.50	14489-.50	Dish Volume -14.0cc

7MGTE 3.0L - REVERSE DOME

- Forged of 2618 High Strength Alloy

Compression Ratio computed with
.010 deck and .038 head gasket

Bore	Weight	40.0cc	Part Number	Ring Set
7MGTE 3.0L - 3.582 Stroke - 5.984 Rod - 1.299 C/H - .866 x 2.250 65 Gram Pin				
3.287	TBA	8.40	14490-.50	
3.307	TBA		14490-1.0	Dish Volume -18.5cc

MR2 4AGE (88-92) - FLAT TOP

- Forged of 2618 High Strength Alloy

Compression Ratio computed with
.010 deck and .038 head gasket

Bore	Weight	39.0cc	Part Number	Ring Set
MR2 (88-92) - 3.031 Stroke - 4.804 Rod - 1.210 C/H - .866 x 2.250 65 Gram Pin				
3.228	TBA	8.60	14497-1.0	Valve Relief Volume 4.8cc

WRIST PINS



TOOL STEEL WRIST PINS

High performance engines require high performance wrist pins. Probe 9310 tool steel wrist pins are designed to deliver the ultimate in weight reduction while maintaining the ultimate in strength and reliability.

Upgrade To Tool Steel Pins When Ordering
Probe Forged Piston And Receive Discounted Pricing!

Diameter	Length	Wall Thickness	Weight	Part Number
.090 Wall				
.827	2.250	.090	58 grams	13992
.912	2.500	.090	75 grams	13993
.927	2.250	.090	65 grams	13994
.927	2.500	.090	76 grams	11110
.120 Wall				
.866	2.500	.120	92 grams	13995
.912	2.500	.120	93 grams	11112
.927	2.500	.120	96 grams	11113
.990	2.930	.120	120 grams	11117
.150 Wall				
.787	2.500	.150	TBA	14632
.866	2.500	.150	108 grams	14219
.912	2.500	.150	115 grams	14223
.927	2.500	.150	118 grams	14224
.990	2.930	.150	149 grams	14225

CUSTOM PISTONS

Don't See What Your Looking For?
Probe Can Manufacture Custom
Pistons For ANY Configuration,
From 4 Pieces to 4,000 Pieces! For
More Information, Call To Speak To Our Technical Staff.



WRIST PIN UPGRADE

For Added Lightweight & Durability
Order Optional Tool Steel Pins
.927 x .090 Wall x 2.500 Part #11110
.927 x .120 Wall x 2.500 Part #11113
Now! Upgrade For Minimal Charge!



PERFORMANCE MATCHED COMPONENTS

Probe Industries offers a large variety of engines & kits for both stock stroke and stroker combinations. They are built with components that are matched based on the performance level of the intended use from performance street to all out competition. We have divided these into four distinct series, the SS/GT, Street Fighter, Pro Street & Dominator Series. Follow the shaded columns to find the kit that is best suited for your application.

SS & GT



SS & GT Kits include:

- Cast Steel Crankshaft
- Probe FPS Forged Pistons
- Race Ready Steel Rods
- Moly Rings
- CL77 Bearings

STREET FIGHTER



Street Fighter Kits include:

- Cast Steel Crankshaft
- Probe SRS Forged Pistons
- Probe CNC Beam Forged Rods
- Moly Rings
- CL77 Bearings

CHEVY 350

CI	Bore	Stroke	Rod/L	Piston Top	Dish/Dome	Compression Ratio			Oversizes
						58cc	61cc	64cc	
Chevy 355	4.030	3.480	5.700	Flat top		10.67	9.95	8.79	030-040-060
Chevy 355	4.030	3.480	6.000	Flat top		10.67	9.95	8.79	030-040-060
Chevy 355	4.030	3.480	5.700	Flat top		10.67	9.95	8.79	030-040-060
Chevy 355	4.030	3.480	6.000	Flat top		10.67	9.95	8.79	030-040-060
Chevy 355	4.030	3.480	6.125	Flat top		10.67	9.95	8.79	030-040-060
Chevy 355	4.030	3.480	5.700	Dome	3.5	12.04	11.56	11.12	STD-030-040-060
Chevy 355	4.030	3.480	6.000	Dome	3.5	12.04	11.56	11.12	STD-030-040-060
Chevy 355	4.030	3.480	5.700	Dome	12.5	13.94	13.29	12.71	STD-030-040-060
Chevy 355	4.030	3.480	6.000	Dome	12.5	13.94	13.29	12.71	STD-030-040-060
Chevy 355	4.030	3.480	5.700	Dish	13.8	9.55	9.25	9.06	STD-030-040-060
Chevy 355	4.030	3.480	6.000	Dish	9.8	10.03	9.70	9.49	STD-030-040-060
Chevy 363	4.030	3.562	6.000	Flat top		11.05	10.66	10.29	030-040-060
Chevy 363	4.030	3.562	6.000	Dome	11.1	13.90	13.27	12.70	030-040-060
Chevy 383	4.030	3.750	5.700	Flat top		11.45	10.68	9.39	STD-030-040-060
Chevy 383	4.030	3.750	6.000	Flat top		11.45	10.68	9.39	STD-030-040-060
Chevy 383	4.030	3.480	5.700	Flat top					STD-030-040-060
Chevy 383	4.030	3.480	6.000	Flat top					STD-030-040-060
Chevy 383	4.030	3.750	5.700	Dome	7.3	13.68	13.10	12.57	STD-030-040-060
Chevy 383	4.030	3.750	6.000	Dome	7.3	13.68	13.10	12.57	STD-030-040-060
Chevy 383	4.030	3.750	5.700	Dish	20.4	9.47	9.20	8.94	030-040-060
Chevy 383	4.030	3.750	6.000	Dish	12.8	10.35	10.02	9.71	STD-030-040-060

CHEVY 400

CI	Bore	Stroke	Rod/L	Piston Top	Dish/Dome	Compression Ratio			Oversizes
						58cc	61cc	64cc	
Chevy 406	4.155	3.750	5.700	Flat top		12.15	11.72	11.32	STD-030-040
Chevy 406	4.155	3.750	6.000	Flat top		12.15	11.72	11.32	STD-030-040
Chevy 406	4.155	3.750	5.700	Dome	4.8	13.79	12.23	12.71	030-040
Chevy 406	4.155	3.750	6.000	Dome	4.8	13.79	12.23	12.71	030-040
Chevy 406	4.155	3.750	6.000	Dome	11.5	15.36	14.66	14.03	030-040
Chevy 406	4.155	3.750	5.700	Dish	22.5	9.73	9.46	9.20	030-040
Chevy 406	4.155	3.750	5.700	Dish	15.0	10.59	10.26	9.96	030-040
Chevy 406	4.155	3.750	6.000	Dish	15.0	10.59	10.26	9.96	030-040
Chevy 434	4.155	4.000	6.000	Dome	7.5	15.26	14.02	12.09	030-040

CHEVY 454

CI	Bore	Stroke	Rod/L	Piston Top	Dish/Dome	Compression Ratio			Oversizes
						106cc	112.0cc	118.0cc	
Chevy 460	4.280	4.000	6.135	Flat top		8.64	8.29	7.96	030-060-070-100-125
Chevy 460	4.280	4.000	6.385	Flat top		8.64	8.29	7.96	030-060-070-100-125
Chevy 460	4.280	4.000	6.135	Dome	18.0	10.42	9.90	9.43	030-060-070-125
Chevy 460	4.280	4.000	6.135	Dome	47.0	14.56	13.53	12.65	030-060-070-100-125
Chevy 460	4.280	4.000	6.385	Dome	18.0	10.42	9.90	9.43	030-060-070-100-125
Chevy 460	4.280	4.000	6.385	Dome	47.0	14.56	13.53	12.65	030-060-070-100-125

(Chevy 454 Continued On Page 51)

PRO STREET



Pro Street Kits include:

- Forged Steel Crankshaft
- Probe SRS Forged Pistons
- Probe Forged 4340 Rods
- Race Rings
- CL77 Bearings

DOMINATOR



Dominator Kits include:

- Forged 4340 Crankshaft
- Probe SRS Forged Pistons
- Probe Forged 4340 Rods
- Tool Steel Wrist Pins
- File-fit Rings
- H-Bearings

TOOL STEEL WRIST PIN UPGRADE



Probe 9310 tool steel wrist pins are designed to deliver the ultimate in weight reduction while maintaining the maximum strength and reliability. Take advantage of discount pricing when ordering Probe tool steel pins as an upgrade with your engine kits at nominal cost!

S/S	S/F	P/M	DOM	Notes
13999-SS	13999-SF	13999-PM	13999-DM	
	14359-SF	14359-PM	14359-DM	Specify 1 or 2 piece RMS
			14362-DM	Ultralight 47# crank-Specify 1 or 2 piece RMS
			14337-DM	Ultralight 47# crank-1568 gram b/w-Specify 1 or 2 piece RMS
			14338-DM	Ultralight 47# crank-1522 gram b/w-Specify 1 or 2 piece RMS
	14364-SF	14364-PM	14364-DM	Specify 1 or 2 piece RMS
	14367-SF	14367-PM	14367-DM	Specify 1 or 2 piece RMS
		14370-PM	14370-DM	Specify 1 or 2 piece RMS
		14372-PM	14372-DM	Specify 1 or 2 piece RMS
14376-SS	14376-SF	14376-PM	14376-DM	Specify 1 or 2 piece RMS
	14380-SF	14380-PM	14380-DM	Specify 1 or 2 piece RMS
		14383-PM	14383-DM	Ultralight 47# crank-Specify 1 or 2 piece RMS
		14384-PM	14384-DM	Ultralight 47# crank-Specify 1 or 2 piece RMS
14008-SS	14008-SF	14008-PM	14008-DM	Specify 1 or 2 piece RMS
	14394-SF	14394-PM	14394-DM	Specify 1 or 2 piece RMS
			14389-DM	Ultra, 2 piece rear main seal
			14390-DM	Ultra, 2 piece rear main seal
		14387-PM	14387-DM	Specify 1 or 2 piece RMS
		14391-PM	14391-DM	Specify 1 or 2 piece RMS
14397-SS	14397-SF	14397-PM	14397-DM	Specify 1 or 2 piece RMS
	14400-SF	14400-PM	14400-DM	Specify 1 or 2 piece RMS
S/S	S/F	P/M	DOM	Notes
	14017-SF	14017-PM	14017-DM	
		14020-PM	14020-DM	
		14417-PM	14417-DM	
		14410-PM	14410-DM	
		14412-PM	14412-DM	"Alcoholic"
	14416-SF	14416-PM	14416-DM	
	14414-SF	14414-PM	14414-DM	
	14413-SF	14413-PM	14413-DM	
		14024-PM	14024-DM	
S/S	S/F	P/M	DOM	Notes
14360-SS	14360-SF	14360-PM	14360-DM	
		14363-PM	14363-DM	
14056-SS	14056-SF	14056-PM	14056-DM	
		14361-PM	14361-DM	
		14365-PM	14365-DM	
		14366-PM	14366-DM	

PERFORMANCE MATCHED COMPONENTS

Probe Industries offers a large variety of engines & kits for both stock stroke and stroker combinations. They are built with components that are matched based on the performance level of the intended use from performance street to all out competition. We have divided these into four distinct series, the SS/GT, Street Fighter, Pro Street & Dominator Series. Follow the shaded columns to find the kit that is best suited for your application.

SS & GT



SS & GT Kits include:

- Cast Steel Crankshaft
- Probe FPS Forged Pistons
- Race Ready Steel Rods
- Moly Rings
- CL77 Bearings

STREET FIGHTER



Street Fighter Kits include:

- Cast Steel Crankshaft
- Probe SRS Forged Pistons
- Probe CNC Beam Forged Rods
- Moly Rings
- CL77 Bearings

CHEVY 454 (Continued)

CI	Bore	Stroke	Rod/L	Piston Top	Dish/Dome	Compression Ratio			Oversizes
						106cc	112.0cc	118.0cc	
Chevy 460	4.280	4.250	6.250	Flat top		9.12	8.74	8.40	030-060-070-100
Chevy 489	4.280	4.250	6.385	Flat top		9.12	8.74	8.40	030-060-070-100
Chevy 489	4.280	4.250	6.250	Dome	18.0	11.00	10.44	9.94	030-060-070-100
Chevy 489	4.280	4.250	6.385	Dome	18.0	11.00	10.44	9.94	030-060-070-100
Chevy 489	4.280	4.250	6.385	Dome	47.0	15.37	14.28	13.34	030-060-070-100

FORD 302

CI	Bore	Stroke	Rod/L	Piston Top	Dish/Dome	Compression Ratio			Oversizes
						58cc	61cc	64cc	
Ford 306	4.030	3.000	5.090	Dish	15.0	8.13	7.89	7.66	STD-030-040-060
Ford 306	4.030	3.000	5.090	Dome	8.0	11.17	10.70	10.27	STD-030-040-060
Ford 306	4.030	3.000	5.090	Dome	8.0	11.17	10.70	10.27	STD-030-040
Ford 306	4.030	3.000	5.090	Flat top		9.35	9.02	8.72	STD-030-040
Ford 331	4.030	3.250	5.400	Dish	14.2	8.24	8.01	7.79	STD-030-040
Ford 331	4.030	3.250	5.400	Dish	20.1	8.24	8.01	7.79	STD-030-040
Ford 331	4.030	3.250	5.400	Flat top		10.47	10.10	9.75	STD-030-040
Ford 331	4.030	3.250	5.400	Dome	9.0	12.86	12.30	11.79	STD-030-040
Ford 331	4.030	3.250	5.400	Dome	9.0	12.86	12.30	11.79	STD-030-040
Ford 347	4.030	3.400	5.400	Dish	13.8	9.24	8.95	8.68	STD-030-040
Ford 347	4.030	3.400	5.315	Dish	14.2	9.24	8.95	8.68	STD-030-040
Ford 347	4.030	3.400	5.315	Dish	20.1	8.59	8.34	8.11	STD-030-040
Ford 347	4.030	3.400	5.315	Dome	9.0	12.20	11.68	9.00	STD-030-040
Ford 347	4.030	3.400	5.315	Dome	9.0	12.20	11.68	9.00	STD-030-040
Ford 347	4.030	3.400	5.400	Dome	9.0	12.20	11.68	9.00	STD-030-040
Ford 347	4.030	3.400	5.400	Dome	9.0	12.20	11.68	9.00	STD-030-040
Ford 347	4.030	3.400	5.315	Flat top		10.47	10.10	9.75	STD-030-040
Ford 347	4.030	3.400	5.400	Flat top		10.47	10.10	9.75	STD-030-040

FORD 351W

CI	Bore	Stroke	Rod/L	Piston Top	Dish/Dome	Compression Ratio			Oversizes
						58cc	61cc	64cc	
Ford 357W	4.030	3.500	5.956	Dish	15.9	9.25	8.97	8.71	030-040-060
Ford 357W	4.030	3.500	5.956	Flat top		11.73	11.31	10.44	030-040-060
Ford 383W	4.030	3.750	6.250	Dish	19.3	9.59	9.31	9.05	030-040-060
Ford 383W	4.030	3.750	6.250	Flat top		11.58	11.17	10.79	030-040-060
Ford 393W	4.030	3.850	5.956	Flat Top		11.87	11.44	11.05	STD-030-040-060
Ford 393W	4.030	3.850	5.956	Flat Top	15.0	10.32	10.01	9.27	STD-030-040-060
Ford 393W	4.030	3.850	5.956	Dish	30.0	8.77	8.54	8.30	STD-030-040-060
Ford 393W	4.040	3.850	6.200	Dish	19.3	9.83	9.54	9.27	030-040-060
Ford 393W	4.030	3.850	6.200	Flat top		9.83	9.54	9.27	030-040-060
Ford 408W	4.030	4.000	6.125	Dish	19.3	10.18	9.88	9.60	030-040-060
Ford 408W	4.030	4.000	6.250	Dish	22.0	9.88	9.60	9.33	030-040-060
Ford 408W	4.030	4.000	6.250	Flat top		12.29	11.85	11.44	030-040-060
Ford 408W	4.030	4.000	6.125	Flat top		12.29	11.85	11.44	030-040-060

(Chevy 351W Continued On Page 53)

PRO STREET



Pro Street Kits include:

- Forged Steel Crankshaft
- Probe SRS Forged Pistons
- Probe Forged 4340 Rods
- Race Rings
- CL77 Bearings

DOMINATOR



Dominator Kits include:

- Forged 4340 Crankshaft
- Probe SRS Forged Pistons
- Probe Forged 4340 Rods
- Tool Steel Wrist Pins
- File-fit Rings
- H-Bearings

TOOL STEEL WRIST PIN UPGRADE



Probe 9310 tool steel wrist pins are designed to deliver the ultimate in weight reduction while maintaining the maximum strength and reliability. Take advantage of discount pricing when ordering Probe tool steel pins as an upgrade with your engine kits at nominal cost!

S/S	S/F	P/M	DOM	Notes
	14371-SF			
		14368-PM	14368-DM	
	14045-SF			
		14048-PM	14048-DM	
		14369-PM	14369-DM	
G/T	S/F	P/S	DOM	Notes
11815-GT	11815-SF	11815-PS	11815-DM	
	10153-SF	10153-PS	10153-DM	all, except Twisted Wedge
	14076-SF	14076-PS	14076-DM	Twisted Wedge Heads
11101-GT	11101-SF	11101-PS	11101-DM	
	11822-SF	11822-PS	11822-DM	
	13477-SF	13477-PS	13477-DM	Blower
	11413-SF	11413-PS	11413-DM	
		14373-PS	14373-DM	all, except Twisted Wedge
		14374-PS	14374-DM	Twisted Wedge Heads
10123-GT	10123-SF	10123-PS	10123-DM	
	11823-SF	11823-PS	11823-DM	
	10728-SF	10728-PS	10728-DM	Blower
		14272-PS	14272-DM	all, except Twisted Wedge
		14273-PS	14273-DM	Twisted Wedge Heads
		10166-PS	10166-DM	all, except Twisted Wedge
		13925-PS	13925-DM	Twisted Wedge Heads
11433-GT	11415-SF	11415-PS	11415-DM	
	11433-SF	11433-PS	11433-DM	
G/T	S/F	P/S	DOM	Notes
10137-GT	10137-SF	10137-PS	10137-DM	
	11488-SF	11488-PS	11488-DM	
		11858-PS	11858-DM	
		11442-PS	11442-DM	
10138-GT	10138-SF			
12406-GT	12406-SF			
	14096-SF			Blower
	12106-SF	12106-PS	12106-DM	
	12105-SF	12105-PS	12105-DM	
	11826-SF	11826-PS	11826-DM	
	11859-SF	11859-PS	11859-DM	
	11443-SF	11443-PS	11443-DM	
	11420-SF	11420-PS	11420-DM	

PERFORMANCE MATCHED COMPONENTS

Probe Industries offers a large variety of engines & kits for both stock stroke and stroker combinations. They are built with components that are matched based on the performance level of the intended use from performance street to all out competition. We have divided these into four distinct series, the SS/GT, Street Fighter, Pro Street & Dominator Series. Follow the shaded columns to find the kit that is best suited for your application.

SS & GT



SS & GT Kits include:

- Cast Steel Crankshaft
- Probe FPS Forged Pistons
- Race Ready Steel Rods
- Moly Rings
- CL77 Bearings

STREET FIGHTER



Street Fighter Kits include:

- Cast Steel Crankshaft
- Probe SRS Forged Pistons
- Probe CNC Beam Forged Rods
- Moly Rings
- CL77 Bearings

FORD 351W (Continued)

CI	Bore	Stroke	Rod/L	Piston Top	Dish/Dome	Compression Ratio			Oversizes
						58cc	61cc	64cc	
Ford 418W	4.030	4.100	6.250	Flat top		12.58	12.12	11.70	030-040-060
Ford 418W	4.030	4.100	6.200	Dish	22.0	10.21	9.88	9.57	030-040-060
Ford 427W	4.030	4.170	6.125	Dish	19.3	10.58	10.25	9.97	030-040-060
Ford 427W	4.030	4.170	6.125	Flat top		12.77	12.31	11.89	030-040-060

FORD 351C

CI	Bore	Stroke	Rod/L	Piston Top	Dish/Dome	Compression Ratio			Oversizes
						58cc	64cc	68cc	
Ford 383C	4.030	3.750	6.000	Flat top	3.0	12.93	11.95	11.40	030-040
Ford 383C	4.030	3.750	6.125	Flat top	3.0	11.60	10.80	10.33	020-030-040
Ford 393C	4.030	3.850	5.956	Dish	16.0	10.10	9.51	9.16	030-040
Ford 393C	4.030	3.850	5.956	Flat top	3.0	12.93	11.95	11.40	030-040

FORD 4.6L & 5.1L

CI	Bore	Stroke	Rod/L	Piston Top	Dish/Dome	Compression Ratio			Oversizes
						42.4cc	49.8cc	54.2cc	
Ford 4.6L	3.552	3.550	5.933	Dish	4.5	11.18	9.99	9.41	STD-020-030
Ford 4.6L	3.552	3.550	5.933	Dish	10.5	10.10	9.13	8.65	STD-020-030
Ford 4.6L	3.552	3.550	5.933	Dish	18.1	9.00	8.23	7.80	STD-020-030
Ford 4.6L	3.552	3.550	5.933	Flat top		11.92	10.57	9.92	STD-020-030
Ford 5.1L	3.625	3.750	5.933	Dish	21.0	8.92	8.20	7.82	STD

FORD 460

CI	Bore	Stroke	Rod/L	Piston Top	Dish/Dome	Compression Ratio			Oversizes
						74cc	86cc	100cc	
Ford 460	4.390	3.850	6.605	Dish	11.0	12.21	10.99	9.94	030-060
Ford 460	4.390	3.850	6.605	Flat top	3.0	11.50	10.28	9.16	030-060
Ford 521	4.390	4.300	6.800	Flat top	3.0	12.61	11.26	10.20	030-080
Ford 521	4.390	4.300	6.800	Dish	22.0	10.44	9.52	8.64	030-080
Ford 521	4.390	4.300	6.700	Dish	26.0	10.08	9.22	8.40	030-080
Ford 521	4.390	4.300	6.605	Flat top	3.0	12.61	11.26	10.20	030-080
Ford 521	4.390	4.300	6.700	Flat top	3.0	12.84	11.47	10.39	030-080
Ford 545	4.390	4.500	6.800	Dish	18.5	10.78	9.80	8.87	030-080
Ford 545	4.390	4.500	6.700	Dish	22.0	10.44	9.52	8.64	030-080
Ford 545	4.390	4.500	6.700	Flat top	3.0	13.15	11.74	10.46	030-080
Ford 545	4.390	4.500	6.800	Flat top	3.0	13.15	11.74	10.46	030-080

FLEXPLATES, FLYWHEELS & DAMPERS



For your convenience Probe carries a full line of SFI and Non SFI flexplates, flywheels and dampers.

Contact our technical staff for the perfect components for your application.



PRO STREET



Pro Street Kits include:

- Forged Steel Crankshaft
- Probe SRS Forged Pistons
- Probe Forged 4340 Rods
- Race Rings
- CL77 Bearings

DOMINATOR



Dominator Kits include:

- Forged 4340 Crankshaft
- Probe SRS Forged Pistons
- Probe Forged 4340 Rods
- Tool Steel Wrist Pins
- File-fit Rings
- H-Bearings

TOOL STEEL WRIST PIN UPGRADE



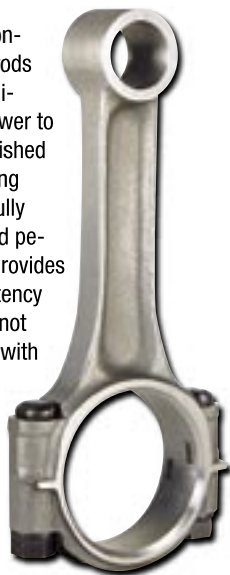
Probe 9310 tool steel wrist pins are designed to deliver the ultimate in weight reduction while maintaining the maximum strength and reliability. Take advantage of discount pricing when ordering Probe tool steel pins as an upgrade with your engine kits at nominal cost!

G/T	S/F	P/S	DOM	Notes
		11444-PS	11444-DM	
	11827-SF	14081-PS	14081-DM	
	11428-SF	11428-PS	11428-DM	
G/T	S/F	P/S	DOM	Notes
		14274-PS	14274-DM	
		11440-PS	11440-DM	
	13937-SF			
	11417-SF			
G/T	S/F	P/S	DOM	Notes
	10160-SF	10160-PS		
	10161-SF	10161-PS		
	10162-SF	10162-PS		
	10163-SF	10163-PS		
	14090-SF	14090-PS		
G/T	S/F	P/S	DOM	Notes
14343-GT	14343-SF			SIR Rod-Pressed
	13587-SF			SIR Rod-Pressed
	13591-SF			H-Beam Rod
	13592-SF			H-Beam Rod
	13590-SF			H-Beam Rod
	11430-SF			H-Beam Rod
	10382-SF			H-Beam Rod
	13596-SF			H-Beam Rod
	13594-SF			H-Beam Rod
	11431-SF			H-Beam Rod
	11432-SF			H-Beam Rod

CONNECTING RODS

CNC BEAM STEEL

These connecting rods are the hi-tech answer to hand polished connecting rods. A fully machined periphery provides a consistency of finish not possible with a hand finished beam. Built to withstand the brutal environments associated with virtually all high performance engines. Recommended for engines in bracket, oval track, and almost all street and strip applications.



FEATURES

- Forged of 5140 Steel
- Multi Stage Heat Treat
- Over 500HP Capable
- Shot Peened
- ARP Wave Lock Bolts
- Bronze Bush or Press Fit
- Weight Balanced \pm 5 Grams
- 45lbs. w/Moly Lube



H BEAM STEEL

These H-Beam Steel Rods are precision forged of select 4340 aircraft quality steel, vacuum degassed to remove impurities. These rods are forged in two pieces to insure proper grain flow. All surfaces are then CNC machined into our track proven H-Beam design and shot-peened to relieve stress. We then install silicon bronze bushings for increased wear resistance and precision ground alignment sleeves in the rod cap to prevent cap walk under high horsepower loads.



FEATURES

- Forged of Quality 4340 Steel
- High Strength H-Beam Design
- Shot Peened
- Bronze Bushed
- 7/16 ARP 12pt Cap Screws
- Weight Balanced \pm 2 Grams
- 63lbs. w/Moly Lube



LIGHTWEIGHT 4340

Manufactured for high horsepower applications where strength is mandatory but a significant reduction in weight is desired. Probe Lightweight Steel Connecting Rods are manufactured of 4340 Steel which provides the excellent strength to weight ratio and are about 50 grams lighter than most H-beams. The Lightweight features 7/16 ARP cap screws and are dowelled to eliminate cap walk.



FEATURES

- Forged of Quality 4340 Steel
- Lightweight I-Beam Design
- Shot Peened
- Bronze Bushed
- 7/16 ARP 12pt Cap Screws
- Weight Balanced \pm 2 Grams
- 63lbs. w/Moly Lube



ULTRALIGHT 4340

For use in very high rpm engines, two barrel oval track, and drag motors with no power adders. Designed to provide maximum performance with a minimum of rotating mass. Pains-takingly manufactured from premium 2 piece 4340 steel forgings, which will insure proper grain flow for maximum strength. Then fully machined on the latest in CNC equipment to ensure dimensional accuracy. Lastly ARP 8740 rod bolts are installed through the dowelled rod caps.



FEATURES

- Forged of Quality 4340 Steel
- Ultralight I-Beam Design
- Shot Peened
- Bronze Bushed
- 7/16 ARP 12pt Cap Screws
- Weight Balanced \pm 2 Grams
- 63lbs. w/Moly Lube



CONNECTING RODS

CONNECTING RODS CHART

Use the new, easy to use, chart to find the connecting rod you need. Select the specs from the columns at the left, then choose the style that best suits your application.

There are many new part numbers listed, and we will continue to add more in the future. If you don't see what you would like here, please call and check with us.



CNC BEAM STEEL



H BEAM STEEL



LIGHTWEIGHT 4340



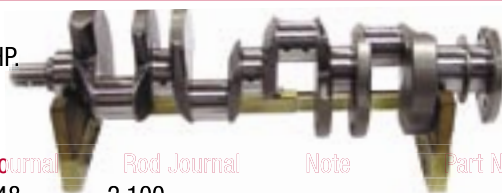
ULTRALIGHT 4340

Length	Note	Pin	B/E Width	Weight	Part #	Weight	Part #	Weight	Part #
Chevy Small Block - 2.100 Journal									
5.700		.927	.943	543g	10062	640g	10076	TBA	10067
5.700	Press Fit	.927	.943	543g	10061				553g 10665
6.000		.927	.943	557g	10064	668g	10078	575g	10068
6.000	Press Fit	.927	.943	557g	10063				557g 13494
6.125		.927	.943	569g	11662	670g	10079	599g	10069
6.200		.927	.943	TBA	13975	680g	10081	620g	11664
6.250		.927	.943			685g	10082	639g	11665
Chevy 427-454 - 2.200 Journal									
6.135		.990	.990	853g	11663	798g	10080	746g	10070
6.250		.990	.990	TBA	14068				
6.385		.990	.990			802g	10083	753g	10071
6.535		.990	.990			815g	10084	784g	11666
6.700		.990	.990			825g	10085	774g	11667
6.800		.990	.990			835g	10086	776g	11668
Chrysler 440 - 2.375 Journal									
6.760		1.094	1.007			TBA	10087		
Ford 4.6L - 2.086									
5.933		.866	.938	TBA	14429	TBA	12452		580g 12453
Ford 302 (5.0L) - 2.123 Journal									
5.090		.912	.830	556g	11772	615g	10073	510g	10065
5.090	Press Fit	.912	.830	TBA	14262				519g 11449
5.315		.912	.830	525g	11424	610g	10074	520g	11670
5.400		.912	.830	565g	10060	620g	10075	530g	10066
5.400		.927	.830	TBA	13754	620g	11260		531g 11677
Ford 351W - 2.311 Journal									
5.956		.912	.830	TBA	14207	695g	10077	630g	11669
Ford 351W - 2.100 Journal (Chevy Journal)									
6.000		.927	.943	557g	10064	668g	10078	575g	10068
6.125		.927	.943	569g	11662	670g	10079	599g	10069
6.200		.927	.943	TBA	13975	680g	10081	620g	11664
6.250		.927	.943			685g	10082	639g	11665
Ford 429/460 - 2.500 Journal									
6.605		1.040	1.000			TBA	10088		
Ford 429/460 - 2.200 Journal (Chevy BB Journal)									
6.700		.990	.990			825g	10085	774g	11667
6.800		.990	.990			835g	10086	776g	11668
Honda/Acura - 1.770 Journal									
5.290		.827	.935			TBA	14516		496g 12039
5.394		.748	.892			TBA	14517		508g 12042
5.394		.827	.935			TBA	14518		430g 12038
5.430		.827	.858			TBA	14519		487g 14100
Honda/Acura - 1.888 Journal									
5.580		.866	.935			TBA	14520		468g 12040
5.630		.866	.935			TBA	14521		472g 12041
5.950		.866	.935						TBA 14200

CRANKSHAFTS

STREET FIGHTER CAST STEEL

Manufactured of high carbon steel in a variety of applications and strokes these crankshafts are perfect for any performance application up to 500 HP. Best suited to higher horsepower daily drivers.



Make/Model	Cubic Inch	Stroke	Rod Length	Main Journal	Rod Journal	Note	Part Number
Chevy 350	355	3.480	5.700	2.448	2.100		10337
	383	3.750	5.700	2.448	2.100		10014
	383	3.750	5.700	2.448	2.100	1 Piece Rear Main Seal	10015
	383	3.750	6.000	2.448	2.100		13649
Chevy 400	406	3.750	5.700	2.648	2.100		10016
Chevy 454	454	4.000	6.135	2.748	2.200		10017
	496	4.250	6.250	2.748	2.200		13766
Ford 289/302 (5.0L)	306	3.000	5.090	2.248	2.123	28 oz End Balance	10032
	306	3.000	5.090	2.248	2.123	50 oz End Balance	10024
	331	3.250	5.400	2.248	2.123		10019
	347	3.400	5.400	2.248	2.123		10018
Ford 351 Windsor	393	3.850	6.125	3.000	2.100		12108
	393	3.850	6.125	3.000	2.311		10020
	408	4.000	6.125	3.000	2.100		10021
	427	4.170	6.125	3.000	2.100		10028
Ford 351 Cleveland & SVO	393	3.850	5.956	2.750	2.311		14080
Ford 460	460	3.850	6.605	3.000	2.500		10029
	501	4.150	6.700	3.000	2.200		10030
	521	4.300	6.605	3.000	2.500		14276
	532	4.300	6.700	3.000	2.200		10022
	552	4.500	6.700	3.000	2.200		10023
Ford 4.6L	4.6L	3.550	5.933	2.851	2.086		10336
	5.0L	3.750	5.850	2.851	2.086		14204

PRO STREET FORGED STEEL

Machined from aircraft quality 4130 or 5140 steel, these forged steel crankshafts are perfect for high compression or blown street applications as well as most race cars. Horsepower ratings should be limited to the 700 HP range for maximum efficiency.



Make/ Model	Stroke	Rod Length	Main Journal	Rod Journal	Part Number
Chevy 350	3.480	5.700	2.448	2.100	10033
	3.500	5.700	2.448	2.100	10034
	3.562	5.700	2.448	2.100	10035
	3.750	5.700	2.448	2.100	10036
Chevy 400	3.750	6.000	2.648	2.100	10038
Chevy 454	4.000	6.135	2.748	2.200	10040
	4.250	6.385	2.748	2.200	10042
Ford 4.6L	3.554	5.933	2.851	2.086	14120
	3.750	5.850	2.851	2.000	14203

DOMINATOR 4340 FORGED

For absolutely serious street, and any racing application, these crankshafts are machined from premium 4340 steel and are heat treated for maximum strength.



Make/Model	Cubic Inch	Stroke	Rod Length	Main Journal	Rod Journal	Note	Part Number
Chevy 350	355	3.480	5.700	2.448	2.100		10043
	355	3.480	5.700	2.448	2.100	1 Piece Rear Main Seal	14275
	355	3.480	5.700	2.448	2.100	1 Piece Light Weight	14304
	355	3.480	5.700	2.448	2.100	2 Piece Light Weight	14305
	358	3.500	5.700	2.448	2.100		10044
	363	3.562	5.700	2.448	2.100		14382
	370	3.625	5.700	2.448	2.100		14282
	383	3.750	5.700	2.448	2.100		11679
	383	3.750	5.700	2.448	2.100	1 Piece Rear Main Seal	13742
	383	3.750	5.700	2.448	2.100	1 Piece Light Weight	14306
	383	3.750	5.700	2.448	2.100	2 Piece Light Weight	14307
	383	3.750	5.700	2.448	2.100		10045
	396	3.875	6.000	2.448	2.100		10046
	408	4.000	6.000	2.448	2.100		10048
Chevy 400	406	3.750	5.700	2.648	2.100		10047
	421	3.875	6.000	2.648	2.100		10125
	434	4.000	6.000	2.648	2.100		10049
Chevy 454	454	4.000	6.135	2.748	2.200		11900
	434	4.000	6.135	2.748	2.200	1 Piece Rear Main Seal	10039
	496	4.250	6.385	2.748	2.200		11901
	496	4.250	6.385	2.748	2.200	1 Piece Rear Main Seal	10058
	572	4.500	6.385	2.748	2.200		10037
	572	4.500	6.385	2.748	2.200	1 Piece Rear Main Seal	10041
Ford 302 (5.0L)	302	3.000	5.090	2.248	2.123		10050
	331	3.250	5.400	2.248	2.123		10051
	347	3.400	5.315	2.248	2.123		10052
Ford 351 Cleveland & SVO	383	3.750	6.125	2.750	2.100		10012
	408	4.000	6.200	3.000	2.100		10059
	418	4.100	6.200	2.750	2.100		10013
Ford 351 Windsor	383	3.500	6.000	3.000	2.100		10057
	383	3.750	6.125	3.000	2.100		10054
	393	3.850	6.000	3.000	2.100		14123
	408	4.000	6.200	3.000	2.100		10055
	418	4.100	6.200	3.000	2.100		10056
	427	4.170	6.125	3.000	2.100		10053

INTERNAL BALANCED FORD 4340

Make/Model	Cubic Inch	Stroke	Rod Length	Main Journal	Rod Journal	Part Number
Ford 351 Cleveland & SVO	383	3.750	6.125	2.750	2.100	10003
	418	4.000	6.200	2.750	2.100	10026
	408	4.100	6.200	2.750	2.100	10004
Ford 351 Windsor	383	3.750	6.125	3.000	2.100	10008
	408	4.000	6.200	3.000	2.100	10009
	418	4.100	6.200	3.000	2.100	10025
	427	4.170	6.200	3.000	2.100	10007

MAIN GIRDLES

STREET FIGHTER MAIN GIRDLES

Probe Street Fighter Main Girdles are intended for use in street or most street and strip applications. Street Fighter Main Girdles are manufactured of 3/8" thick Chromoly steel. They are CNC finished for an accurate fit with a minimum of interference. Probe Street Fighter Main Girdles utilize a separate standoff to provide clearance at the main cap and do not require machining or align boring. Belt sanding of the main cap may be required.

Description	Part Number
Ford 289 / 302 - (5.0L)	
Main Girdle w/ARP Studs	10011
351 Windsor Ford (all 2 Bolt Blocks)	
Main Girdle w/ARP Studs	11327

Street & Strip Applications

- 3/8" Thick Chromoly Steel
- CNC Machined
- Designed to clear all stroker applications



DOMINATOR MAIN GIRDLES

Probe Dominator Series Main Girdles are CNC Machined for an accurate fit with a minimum of interference. The Main Girdles use a press fit standoff to provide clearance at the main cap and do not require machining or align boring. Belt sanding of the main cap may be required.

Description	Part Number
Ford 302 (All 2 Bolt Blocks)	
Main Girdle w/ARP Studs	10002
Ford 351W (All 2 Bolt Blocks)	
Main Girdle w/ARP Studs	10005
Ford 429 - 460 (All 2 Bolt Blocks)	
Main Girdle w/ARP Studs	11329

High Horsepower & Competition Applications

- 5/8" Thick Billet Steel
- CNC Machined
- Designed to clear all stroker applications



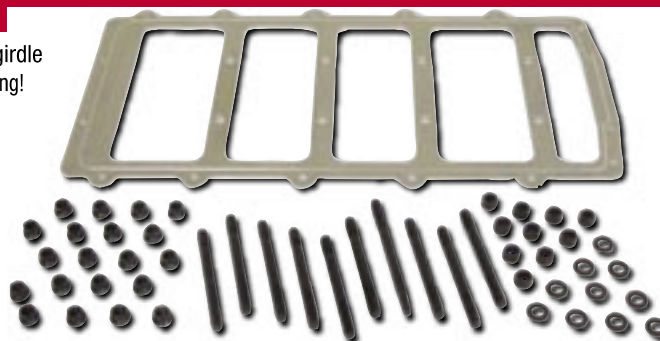
4.6L MAIN GIRDLES

Probe Industries now offers CNC billet aluminum main girdle for the 4.6L main girdle. Included are the special ARP stud kit. Off the shelf availability and racer friendly pricing!

Description	Part Number
Main Girdle w/ARP Studs	14119
Girdle Only	14119-1

High Horsepower & Competition Applications

- 5/16" 6061 T6 aluminum
- CNC Machined
- Designed to clear all stroker applications



ROCKER ARMS

SHAFT ROCKERS

Probe Industries Shaft Rocker Systems offer exceptional rigidity and stability when compared to conventional stud mounted rocker systems. Shaft systems also ease access to the valve train, facilitating valve adjustments and other maintenance functions. Probe Industries Shaft Rocker Systems are CNC machined of 2024-T3511 aluminum and feature dual needle roller bearings. The shafts are manufactured of aircraft certified steel. Also, the stands on all Probe Rockers are made of steel for increased stability. Probe Industries Shaft Rocker Systems use a pair of 1,100 foot pound capacity Torrington captured needle bearings.



Description	Part #
Chevy	
Chevy Canfield 215-1.5	14689
Chevy Canfield 215-1.6	14690
Chevy Canfield 220-1.5	14623
Chevy Canfield 220-1.6	14624
Chevy Dart Pro 1-1.5	14734
Chevy Dart Pro 1-1.6	14735
Chevy/World/Iron Eagle-1.5	11316
Chevy/World/Iron Eagle-1.5/1.6	11318
Chevy/World/Iron Eagle-1.6	11317
Chevy/World/Iron Eagle-1.6/1.5	11319

Description	Part #
Ford	
Blue Thunder (SB)-1.73	12294
Blue Thunder (SB)-1.8	12295
Canfield/Early TFS-1.6/1.7	11300
Canfield/Early TFS- 1.7/1.6	11301
Canfield/Early TFS-1.6	11314
Canfield/Early TFS-1.7	11315
Ford/Dart/World/AFR-1.6	11312
Ford/Dart/World/AFR-1.7	11313
Edelbrock Victor- 1.7	11303
Edelbrock Victor- 1.6	11302

LIGHTWEIGHT ROCKER ARMS

Probe's new lightweight rocker bodies produce quicker response & more power. You've spent big money on titanium valves, retainers and lightweight pushrods to reduce valve train weight. Now you need a rocker that has reduced reciprocating weight. This allows you to run less valve spring pressure. Made of billet 2024 t3511 high strength alloy for ultimate strength and fatigue resistance.



Ratio	Stud	Part Number
Chevy Small Block		
1.5	7/16	14353
1.6	7/16	14354
Chevy 427-454		
1.7	7/16	11645
1.8	7/16	12389

Ratio	Stud	Part Number
Ford Small Block		
1.6	7/16	14355
1.7	7/16	14356
1.6	3/8	14357
1.7	3/8	14358

Ratio	Stud	Part Number
Ford 351C & 429/460		
1.7	7/16	11293
1.8	7/16	11646

NEW! CHRYSLER ROCKER ARMS

Just released are the new Small and Big Block Chrysler Rocker Arm Sets. Added to the fully adjustable rocker arms are the steel spacers required for perfect alignment on your Chrysler Cylinder head. All Probe Rocker Arms are CNC manufactured from 2024-T3511 aluminum.



Description	Part Number
Chry 340/360-1.5	11308
Chry 340/360-1.6	11309

Description	Part Number
Chry 440-1.5	11310
Chry 440-1.6	11311

ROCKER STUD GIRDLES

CHEVY ROCKER STUD GIRDLES

Probe Industries manufactures a variety of valvetrain stabilizers that are the finest in the industry. Each is machined with the same exacting standards that lead Probe to be among the first in the industry to utilize CNC equipment to manufacture these components.



Thickness	Stud	Part Number
Chevy 327-350-400		
Stock, World Products, GM, AFR 180-190-195		
.750	3/8	11333
.750	7/16	11334
AFR 210, Canfield		
.750	7/16	11335

Thickness	Stud	Part Number
Chevy 327-350-400 (continued)		
Dart 220, AFR 220		
.750	7/16	11336
Chevy 427-454		
Stock, Merlin, Iron Eagle		
.750	7/16	11337

FORD ROCKER STUD GIRDLES

Probe Rocker Stud Girdles are manufactured of quality 6061 T-6 aluminum, and are CNC machined to ensure accuracy and a high quality machine finish. They feature close tolerance rolled threads, and are tumble deburred. All hardware is finished for corrosion resistance. A stud girdle set includes both girdle bar assemblies and 16 high strength steel adjuster nuts.



Thickness	Stud	Part Number
Ford 289-302-351W		
Stock, Dart Iron, Dart Aluminum, Edelbrock, AFR		
.750	3/8	11338
.750	7/16	11339
SVO N-351, J-302, K-302		
.750	3/8	11340
.750	7/16	11341
TFS/Street Heat, Canfield, Holley, Brodix		
.750	3/8	11342
.750	7/16	11343
TFS Twisted Wedge		
.750	3/8	11344
.750	7/16	11345

Thickness	Stud	Part Number
Ford 289-302-351W (continued)		
TFS Twisted Wedge "R" 289-302-351W		
.750	3/8	11346
.750	7/16	11347
Ford 351 Cleveland		
Stock, A-302, B-302, C-302		
.750	7/16	11348
Blue Thunder		
.750	7/16	11349
Ford 429/460		
All Iron, Blue Thunder, Cobra Jet		
.750	7/16	11350

TERMS & POLICIES

PAYMENT POLICY

We accept only cash, money orders, certified checks, cashiers checks, and bank drafts or major credit card as deposits or full payment. Personal or uncertified checks will NOT be accepted except as deposit. Company checks are accepted only with approval prior to your order.

SPECIAL ORDERS

All orders for custom made engine components require a 50% deposit. This applies to all non standard , non stocked items. Minimum quantity for custom pistons is 80 pieces. Prices for special order components are to be established on a individual, negotiated basis.

C.O.D. POLICY

All shipments will be made C.O.D. (Certified funds) unless prepayment is received with the order or prior arrangements have been made for an open account. Prepayment must be made in cash, with money orders, certified checks, cashiers checks, or bank drafts. Visa, MasterCard, Discover, and American Express are also accepted. Personal checks are not accepted.

RETURNED GOODS

Custom components are not returnable, regardless of circumstance, unless the customer ordered by written purchase order and the components do not match the specifications on that purchase order. Probe reserves the right to change design, materials, and specifications, or to make product changes without incurring liability or obligation with respect to similar products previously manufactured. A 20% charge to cover handling will be made on all returns of stocked merchandise. All returns must have prior permission and the Returned Material Authorization number must be clearly printed on the outside of the box. Freight Collect shipments will be refused. Care has been taken to insure correctness in this catalog, however, Probe, will not be responsible for any errors. Prices are subject to change without notice.

FREIGHT AND SHIPPING

All shipping is F.O.B. Probe. If no shipping instructions are received with your order, we will ship by the most reasonable means in accordance with the size and weight of your order. If you desire special handling, please specify with your order. Drop shipments will be made only if the order is prepaid.

WARRANTY

All Probe merchandise is warranted to be free from any defects in materials and workmanship. It is the responsibility of the purchaser to inspect all merchandise carefully before use. Any returns must be made before the product has been used or altered in any manner. Credit, repair, or replacement of goods is predicated upon Probe's inspection of the merchandise in question.

DISCLAIMER

Due to the intended usage of the products in this catalog, they are sold without any express warranty or implied warranty of merchantability or fitness for the intended purpose, The parts listed are for "off highway" use and, if installed, could adversely effect the vehicle manufacturer's warranty coverage. With specific exceptions Probe components ARE NOT LEGAL in the State of California on pollution controlled motor vehicles. The federal government and certain other states have various laws that may prohibit the removal and/or modification of any part of the emission system on any street driven vehicles.

Business hours are 8 am to 5 pm PST

Order/Tech line is (310) 784-2977

Fax (310) 784-2970

E-mail info@probeindustries.com

Web Site www.probeindustries.com